

Unmatched Sustainability



Analog Expertise

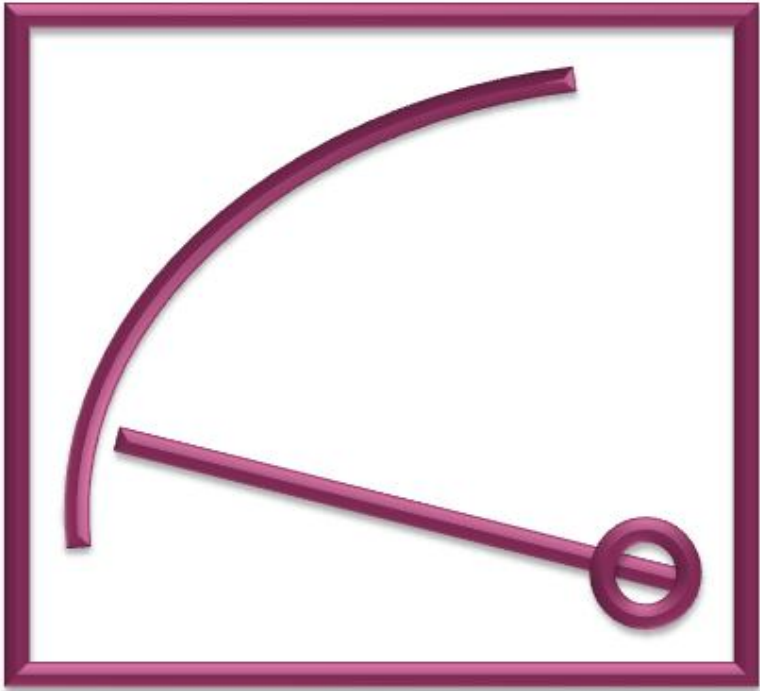


Rishabh Instruments Pvt. Ltd.

Price List w.e.f 1st January 2021

Index

Analog Expertise	Page No
Analog Panel Meters	02
CAM Switches	08
Current Transformers	12
DC Shunts	33
Terms and conditions	34



90° Scale

Group	Type	Description	48x48 mm	72x72 mm	96x96 mm	144x144mm
			LP (INR)			
Moving Iron AC Meters			EQ41	EQ71	EQ91	EQ11
EQ	Voltmeter	6,10,15,25,30,40,50,75,100,110,120,125,132.5,133.33,150,250,300V	455	415	475	695
		400,500,600,750V	535	455	525	775
		Non Standard Voltmeter/Non Std PT Operated Voltmeter/Other than above ranges (upto 1000V)	615	535	605	905
	Milli - Ammeter	100,150,250,400,500,600,750mA	445	405	445	615
	Ammeter	1,1.2,1.25,1.5,2.5,4,5,6,10,15,20,25,CT Operated 5A/1A Secondary	445	395	415	585
		30,40,50,60A	625	475	505	695
		100A	-	475	505	695
		Non Standard Ammeter/Other than above ranges (upto 100A)	665	605	635	885
Moving Iron AC Meters with In-built Selector Switch				SS71	SS91	
SS	Voltmeter / Ammeter	Inbuilt selector switch type Ammeters & Voltmeters (EQ-SWT)	-	645	720	-
Moving Coil DC Meters			PQ41	PQ71	PQ91	PQ11
PQ	Milli - Voltmeter	15**,25**,40**,50 mV	730	630	690	-
		60,75,100,150,250,400,600 & 750mV	700	610	660	1,170
	Voltmeter	1,1.5,2.5,4,5,6,10,15,20,25,30V	700	610	720	1,170
		40,50,60,100,150,200,250,300V	800	700	750	1,180
		400,500,600V	870	710	820	1,230
		Non Standard Voltmeter/Other than above ranges (upto 1000V)	1,100	1,000	1,070	1,460
	Micro - Ammeter	15**,25**,40**,50*,60*,75uA	900	830	920	-
		100,150,200,250,400,500,600,750uA	790	720	750	1,180
	Milli - Ammeter	1,1.5,2.5,4,5,6,10,15,20,25,40,60,100,150,200,250,300,400,500,600,750 mA	670	610	660	1,110
	Ammeter	1,1.5,2.5,4,5,6,10,15,20,25A	670	610	660	1,110
		30,40,60A	810	700	750	1,340
		100A	-	820	830	1,430
		4-20mA	780	730	770	1,280
		Non Standard Ammeter/Other than above ranges (upto 100A)	-	970	990	1,710

** Class 5, * Class 2.5



90° Scale

Group	Type	Description	48x48mm	72x72mm	96x96mm	144x144mm		
			LP (INR)					
Moving Coil AC Meters with Rectifier			VQ41	VQ71	VQ91	VQ11		
VQ	Voltmeter	6**,10**,15**,20**,25**, 40**,50*,60*,75,100,120,125,150,250,300,400,500,600V	1,115	945	1,075	1,505		
		Non Standard Voltmeter/Other than above ranges (upto 600V)	1,295	1,095	1,250	1,650		
	Micro-Ammeter	100,150,250,400,50,600,750uA	1,030	955	990	1,440		
	Milli -Ammeter	1,1.5,2.5,4,5,6,10,15,20,25,30,40,60 75,100mA	905	840	895	1,375		
		150,250,400 ,600,750mA	1,010	945	1,000	1,480		
	Ammeter	1,1.5,2.5,4,5A	-	1,050	1,115	1,585		
		6,10A	-	-	1,180	1,690		
		Non Standard Ammeter/Other than above ranges (upto 10A)	-	-	1,250	1,745		
	** Class 5, * Class 2.5							
Pointer type Frequency Meters with Built In Transducer			ZQ41	ZQ71	ZQ91	ZQ11		
ZQ	Frequency Meter	45-50-55 Hz, 45-55-65 Hz, 55-60-65 Hz	945	895	970	1,040		
		380-400-420 Hz, 360-400-440 Hz	-	865	925	1,000		
Vibrating Reed type Frequency Meters				FQ71	FQ91	FQ11		
FQ	Frequency Meter	45-50-55 Hz, 47-50-53 Hz		840	870	-		
Power Factor Meters with Built In Transducer				CQ71	CQ91	CQ11		
CQ	Power Factor Meter	1Ph. (Not Applicable for CQ71) & 3Ph. balanced load		1,460	1,500	1,580		
		3Ph., 3W unbalanced load (D2C)		-	3,290	3,700		
		3Ph., 4W unbalanced load (V3C)		-	4,020	4,500		
Cap 0.8-1-0.3 Ind (Bal load), Cap 0.8-1-0.8 Ind (Bal load), Cap 0.5-1-0.5 Ind (Bal & Unbal Load) for 1 Phase meter PF range will be Cap 0.5-1-0.5 Ind only. Operating frequency 60Hz - Please contact to nearest sales office.								
Active (W) / Reactive (B) Power Meters with Built In Transducer					WQ91	WQ11		
WQ	Active Power Meter (Wattmeter)	Single Element Single Phase (E1W)			1,600	1,790		
		Single Element 3 Phase 3 Wire Balanced Load (D1W)			1,910	2,040		
		Two Element 3 Phase 3 Wire Unbalanced Load (D2W)			2,540	2,820		
		Single Element 3 Phase 4 Wire Balanced Load (V1W)			2,090	2,230		
		Three Element 3 Phase 4 Wire Unbalanced Load (V3W)			3,150	3,500		
		Single Element Single Phase (E1B)			1,600	1,790		
	Re-active Power Meter (VAr Meter)	Single Element 3 Phase 3 Wire Balanced Load (D1B)			1,910	2,040		
		Two Element 3 Phase 3 Wire Unbalanced Load (D2B)			2,540	2,820		
		Single Element 3 Phase 4 Wire Balanced Load (V1B)			2,090	2,230		
		Three Element 3 Phase 4 Wire Unbalanced Load (V3B)			3,150	3,500		
		Please Specify Measuring Range, Primary & Secondary Voltage & Current While Ordering. Allowable λ factor ranges 0.5 - 1.5						
		Synchroscope Meters					SQ91	SQ11
SQ	Synchroscope	110/100V,127/120V,240/220V,440/380V,480/415V (LED TYPE)			2,270	3,445		
Maximum Demand Ammeters - BIQ / BIEQ			BI41	BI71	BE71	BI91		
MDI	Ammeter	.../1A/1.2/5/6A (8 minutes / 15 minutes)	1,610	1,430	1,775	1,355		
		.../1A/1.2/5/6A (20 minutes)	-	2,195	2,450	2,450		

240° Scale

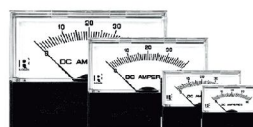
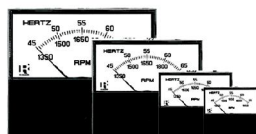
Group	Type	Description	48x48mm	72x72mm	96x96mm	144x144mm
			LP (INR)			
Moving Coil DC Meters			PL41	PL71	PL91	PL11
PL	Milli - Voltmeter	50,60,75,100,150,250,400,600 & 750 mV	-	1,155	1,225	1,435
	Voltmeter	1,1.5, 2.5, 4, 5, 6,10,15,25,30,40,50,60,75,100V	1,255	1,155	1,225	1,435
		150,200,250,300,400,500,600V	-	1,155	1,225	1,435
		Non Standard Voltmeter/Other than above ranges (upto 600V)	-	1,235	1,315	1,545
	Micro-Ammeter	50*,60*,75,100uA	-	1,225	1,515	1,555
		100,150,250,400,500,600uA	-	1,105	1,175	1,495
	Milli - Ammeter	1,1.5,2.5,4,5,6,10,15,20,25,40,50,60,100,150,200,250,300,400,500,600,750 mA	-	1,055	1,125	1,315
	Ammeter	1,1.5,2.5,4,5,6,10,15,20,25A	-	1,055	1,125	1,315
		30,40,50,60A	-	-	1,375	1,435
		4-20mA	1,315	1,195	1,255	1,485
Non Standard Ammeter/Other than above ranges (upto 60A)		-	1,285	1,355	1,575	
* Class 2.5						
Moving Coil AC Meters with Rectifier				VL71	VL91	VL11
VL	Voltmeter	6**,10**,15**,20**,25**,40**,50*,60*,75,100,120,125,150,250,300,400,500,600V	1,345	1,425	1,635	
		Non Standard Voltmeter/Other than above ranges (upto 600V)	1,435	1,505	1,745	
	Ammeter	1A & 5A CT operated	1,455	1,525	1,735	
** Class 5, * Class 2.5						
Frequency Meters with Built In Transducer					ZL91	ZL11
ZL	Frequency Meter	45-50-55 Hz, 45-55-65 Hz, 55-60-65 Hz		1,735	1,905	
		380-400-420 Hz, 360-400-440 Hz		1,825	1,995	
Power Factor Meters with Built In Transducer					CL91	CL11
CL	Power Factor Meter	1Ph. & 3Ph. balanced load		2,765	3,525	
		3Ph., 3W unbalanced load (D2C)		5,025	5,785	
		3Ph., 4W unbalanced load (V3C)		5,485	6,235	
Cap 0.8-1-0.3 Ind (Balanced load), Cap 0.8-1-0.8 Ind (Balanced load), Cap 0.5-1-0.5 Ind (Balanced & Unbalanced Load). For 1 Phase meter PF range will be Cap 0.5-1-0.5 Ind only. Operating frequency 60Hz - Please contact to nearest sales office.						
Active (W) / Reactive (B) Power Meters with Built-in Transducer					WL91	WL11
WL	Active Power Meter (Wattmeter)	Single Element Single Phase (E1W)		3,315	3,465	
		Single Element 3 Phase 3 Wire Balanced Load (D1W)		3,175	3,315	
		Two Element 3 Phase 3 Wire Unbalanced Load (D2W)		4,685	4,835	
		Single Element 3 Phase 4 Wire Balanced Load (V1W)		3,315	3,465	
		Three Element 3 Phase 4 Wire Unbalanced Load (V3W)		4,285	4,415	
	Re-active Power Meter (VA Meter)	Single Element Single Phase (E1B)		3,315	3,465	
		Single Element 3 Phase 3 Wire Balanced Load (D1B)		3,175	3,315	
		Two Element 3 Phase 3 Wire Unbalanced Load (D2B)		4,685	4,835	
		Single Element 3 Phase 4 Wire Balanced Load (V1B)		3,315	3,465	
		Three Element 3 Phase 4 Wire Unbalanced Load (V3B)		4,285	4,415	
Please Specify Measuring Range, Primary & Secondary Voltage & Current While Ordering. Allowable λ factor ranges 0.5 - 1.5						

Analog Panel Meters

Extra Charges Applicable for 90 deg / 240 deg deflection meters	LP (INR)
Standard Scale [e.g. 300/5A (If separate scale is required)]	30
Non-Standard Scale [e.g. RPM, m/min., %, BAR etc. (If separate scale is required)]	55
Customised Scale [Like rpm, m/min., %, BAR etc. This is a surcharge for non standard scale along with the meter price = LP + surcharge]	40
Ammeter (x1) (without suppression)	-
Ammeter (x2) or (x3) suppression (for EQ meters only)	-
Ammeter (x5) or (x6) suppression (for EQ meters only)	30
Ammeter (x2) or (x6) suppression (for VQ & VL meters only)	40
Dual Range with three terminals (for EQ 96 and EQ 144 sizes only)	80
Centre Zero (for PQ, PL, WQ & WL meters only)	30
Zero between left & centre (for PQ, PL, WQ & WL meters only)	35
Zero suppression (1.....5V DC) for PQ or PL meters	40
Additional numbering / marking / red mark	35
Coloured Sectors (red/green) per sector	35
Black scale & yellow / white pointer marking & number	65
Customised frequency EQ (40Hz.....400Hz)	40
Calibration at position other than perpendicular	35
Accuracy Class 1	35
Dual scale with two terminals	40
Triple scale with two terminals	55
Red Pointer Assembly 72x72 or 96x96	65
Spares	LP (INR)
Glass (48,72,96,144)	25
Glass with zero adjustment (48,72,96,144)	30
Anti glare Glass (48,72,96,144)	65
MDI Glass with Zero Adjustment Knob	60
Colour Bezel (White, Blue, Red, Yellow)	45
Clamp-strap with screw (set of 2)	25
Swivel fixing clamp (set of 2)	25
Spring clips (only for 48, set of 2)	45
Bezel / black frame	35
Full Back Cover as per IP-20	45
Rubber Gasket 72 Size	50
Rubber Gasket 96 Size	55
IP 65 protection kit (72 / 96 size)	100
IP 65 protection kit with sealable window (96 size)	130
24V DC Illumination kit	170

ANSI Standard Meters

Challenger Series				Model	361	362	363	364
Length x Height (mm)					45.7 x 57.4	76.2 x 58.5	95.3 x 73.9	131.7 x 103
Round Cut out (mm)					40.35	53.8	53.8	69.5
Moving Iron AC Meters					EQ1C	EQ2C	EQ3C	EQ4C
EQ	Ammeters	Ammeters - Upto 30A		455	400	455	620	
		Ammeters - 40 to 60A		535	485	505	725	
	Voltmeters	Voltmeters - Upto 300V		475	420	485	685	
		Voltmeters - 400 to 600V		515	485	505	735	
Moving Coil DC Meters					PQ1C	PQ2C	PQ3C	PQ4C
PQ	Ammeters	Ammeters - 100 to 500uA		735	735	865	1,125	
		Ammeters - 1mA to 30A		630	580	620	1,050	
		Ammeters - 40 to 60A		-	630	675	1,165	
	Voltmeters	Voltmeters - Upto 30V		630	580	620	1,050	
		Voltmeters - 40 to 300V		715	655	705	1,075	
		Voltmeters - 400 to 600V		790	705	780	1,125	
Frequency Meters					ZQ1C	ZQ2C	ZQ3C	ZQ4C
ZQ	Frequency Meter	45-55Hz, 45-65Hz, 55-65Hz - 110V/240V/415V		-	850	905	-	
Anush Series				Model	011	012		
L x H - In mm					55.6 x 47.2	79.2 x 67.5		
Round Cutout (mm)					39.4	55.6		
Moving Iron AC Meters					EQ1A	EQ2A		
EQ	Ammeters	Ammeter - Upto 30A		-	-	400		
		Ammeter - 40 to 60A		-	-	465		
	Voltmeters	Voltmeter - Upto 300V		-	-	455		
		Voltmeter - 400 to 600V		-	-	465		
Moving Coil DC Meters					PQ1A	PQ2A		
PQ	Ammeters	Ammeter - 100 to 500uA		725	-	-		
		Ammeter - 1mA to 30A		570	-	-		
		Ammeter - 40 to 60A		630	-	-		
	Voltmeters	Voltmeter - Upto 30V		570	-	-		
		Voltmeter - 40 to 300V		640	-	-		
		Voltmeter - 400 to 600V		695	-	-		



Two In One Meters

Model	Type	Description	96x96mm	144x144mm
Moving Iron AC meters			EQ9T	EQ1T
EQ 2 in1		AC Moving Iron Low rating (<30A) Ammeter - Voltmeter combination Meters	745	1,180
		AC Moving Iron High rating (30A & above) Ammeter - Voltmeter combination Meters	875	1,305
		AC Moving Iron Voltmeter - Voltmeter combination Meters	790	1,240
		AC Moving Iron Low rating (<30A) Ammeter - Low rating Ammeter (<30A) combination Meters	745	1,180
		AC Moving Iron High rating (30A & above) Ammeter - Low rating (<30A) Ammeter combination Meters	875	1,305
Frequency Meters			ZQ9T	ZQ1T
2 in1	ZQ 2 in1	Frequency - Frequency combination meters	1,325	1,755
Moving Coil DC meters			PQ9T	PQ1T
PQ 2 in1		DC Moving Coil Low rating (<30A) Ammeter - Voltmeter combination Meters	1,180	1,610
		DC Moving Coil High rating (30A & above) Ammeter - Voltmeter combination Meters	1,315	1,725
		DC Moving Coil Voltmeter - Voltmeter combination Meters	1,125	1,565
		DC Moving Coil Low rating (<30A) Ammeter - Low rating (<30A) Ammeter combination Meters	1,180	1,610
		DC Moving Coil High rating (30A & above) Ammeter - Low rating (<30A) Ammeter combination Meters	1,315	1,725

Run - Hour Meters

Model	Type	Description	72x72mm	96x96mm
Rish Elapsed Time Meters (Hour meters)			ET71	ET91
ETM	Hour meters	Voltage AC Input : 100-125 / 200-250 / 380-440V 50Hz & 60Hz	1,680	1,890



Breaker Control (TNC) Switches

Description	LP (INR)	
	TSR	
	25 A	32 A
TNC 1NO 1NC 60D	810	975
TNC 2NO 2NC 60D	985	1,175

Spring Return Switches

Description	LP (INR)	
	CSR	
	16 A	25 A
ON OFF SPRING RETURN 90D 1P OFF	480	730
ON OFF SPRING RETURN 90D 2P OFF	505	825
ON OFF SPRING RETURN 90D 3P OFF	575	990
ON OFF SPRING RETURN 90D 4P OFF	675	1,080

Description	LP (INR)	
	CSR	
	16 A	25 A
DOUBLE THROW SPRING RETURN 60D 1P 2W OFF	505	825
DOUBLE THROW SPRING RETURN 60D 2P 2W OFF	740	1,080
DOUBLE THROW SPRING RETURN 60D 3P 2W OFF	810	1,345

Description	LP (INR)	
	CSR	
	16 A	25 A
SPRING RETURN 60D 1P 2W W/OFF	460	825
SPRING RETURN 60D 2P 2W W/OFF	675	1,080
SPRING RETURN 60D 3P 2W W/OFF	735	1,345



Reverse Forward Switches

Order code	Description	LP (INR)	Order code	Description	LP (INR)
CRF1-D45L2XXOFS000	RF 45D 2POLE 25A	515	CRF1-D45L3XXOFS000	RF 45D 3POLE 25A	680
CRF1-D60L2XXOFS000	RF 60D 2POLE 25A	515	CRF1-D60L3XXOFS000	RF 60D 3POLE 25A	680
CRF1-E45L2XXOFS000	RF 45D 2POLE 32A	610	CRF1-E45L3XXOFS000	RF 45D 3POLE 32A	780
CRF1-E60L2XXOFS000	RF 60D 2POLE 32A	610	CRF1-E60L3XXOFS000	RF 60D 3POLE 32A	780
CRF1-F45L2XXOFS000	RF 45D 2POLE 40A	1,590	CRF1-F45L3XXOFS000	RF 45D 3POLE 40A	1,790
CRF1-F60L2XXOFS000	RF 60D 2POLE 40A	1,590	CRF1-F60L3XXOFS000	RF 60D 3POLE 40A	1,790
CRF1-G45L2XXOFS000	RF 45D 2POLE 63A	1,930	CRF1-G45L3XXOFS000	RF 45D 3POLE 63A	2,130
CRF1-G60L2XXOFS000	RF 60D 2POLE 63A	1,930	CRF1-G60L3XXOFS000	RF 60D 3POLE 63A	2,130



Instrumentation Switches

Description	LP (INR)			
	CST4			
	6A (PS/MS)	10A	16A	20A
Ammeter Selector Switch - Line Currents with OFF, 4 Pos.	215	260	320	360
Ammeter Selector Switch - Line Currents with Neutral with OFF, 5 Pos.	220	265	325	370
Voltmeter Selector Switch - Voltage between phases with OFF, 4 Pos.	155	240	290	340
Voltmeter Selector Switch - Voltage between phases and individual phases to neutral with OFF, 7 Pos.	285	475	550	590
Voltmeter Selector Switch - Voltage between phases to neutral with OFF, 4 Pos.	275	320	400	435

Note : PS - Plastic Shaft Switch with IP20 / MS - Metal Shaft Switch



Changeover Switches

RISHCAM - COFF 60 / COFF 90 / CWOFF 90	Description	LP (INR)									
		CST1				CSS1				CSH1	
		6A (PS/MS)	10A	16A	20A	25A	32A	40A	63A	100A	200A
With OFF 60 Deg / 90 Deg / 90 Deg without OFF	1P 2W	135	250	290	295	305	345	460	615	3,095	4,460
	2P 2W	175	295	325	385	415	480	625	935	4,515	6,785
	3P 2W	215	365	435	540	620	670	790	1,250	5,840	8,675
	4P 2W	265	425	505	665	820	870	955	1,585	7,445	10,930

RISHCAM - PCF90	Description	LP (INR)									
		CST1				CSS1				CSH1	
		6A (PS/MS)	10A	16A	20A	25A	32A	40A	63A	100A	200A
Phase Changeover With OFF 90 Deg	1P 3W	155	210	250	290	290	380	560	600	2,535	3,615
	2P 3W	200	250	320	400	480	550	635	830	3,720	5,205
	3P 3W	240	295	340	460	580	605	945	1,290	3,965	5,545
DB Phase Changeover With OFF 90 Deg	3P 1W	-	-	-	-	-	-	-	750	-	-

Isolator Switches

RISHCAM - I60 / 90 / 90 CR	Description	LP (INR)									
		CST3				CSS3				CSH3	
		6A (PS/MS)	10A	16A	20A	25A	32A	40A	63A	100A	200A
Isolator 60 / 90 / 90 Deg CR	1P ON-OFF	100	195	230	240	250	305	380	450	2,320	2,970
	2P ON-OFF	135	220	260	280	300	350	455	580	2,855	3,825
	3P ON-OFF	145	290	320	360	410	445	540	760	3,505	4,810
	4P ON-OFF	175	300	340	410	485	515	625	935	4,220	5,835

RISHCAM - I45	Description	LP (INR)									
		CST3				CSS3				CSH3	
		6A (PS/MS)	10A	16A	20A	25A	32A	40A	63A	100A	200A
Isolator 45 Deg	1P ON-OFF	115	160	220	235	240	340	415	495	-	-
	2P ON-OFF	155	200	260	295	330	380	510	635	-	-
	3P ON-OFF	185	240	285	375	430	510	595	870	-	-

Multistep Switches

RISHCAM - MOFF (3 WAY)	Description	LP (INR)									
		CST2				CSS2				CSH2	
		6A (PS/MS)	10A	16A	20A	25A	32A	40A	63A	100A	200A
With OFF 90 Deg	1P 3W	155	285	300	310	295	370	530	590	3,095	4,685
	2P 3W	220	330	365	435	490	525	750	840	4,490	7,070
	3P 3W	305	435	620	665	725	795	995	1,275	5,870	9,220
	4P 3W	390	555	745	815	895	995	1,310	1,535	7,370	11,620

RISHCAM - MOFF (4 WAY)	Description	LP (INR)									
		CST2				CSS2				CSH2	
		6A (PS/MS)	10A	16A	20A	25A	32A	40A	63A	100A	200A
With OFF 60 Deg	1P 4W	180	255	435	480	520	575	655	865	2,755	3,950
	2P 4W	305	470	520	535	550	630	810	1,015	3,950	6,155
	3P 4W	430	430	805	855	895	1,040	1,380	1,545	10,720	13,835

RISHCAM - MOFF (5 WAY)	Description	LP (INR)									
		CST2				CSS2				CSH2	
		6A (PS/MS)	10A	16A	20A	25A	32A	40A	63A	100A	200A
With OFF 60 Deg	1P 5W	195	400	505	565	645	660	800	930	2,790	4,020
	2P 5W	360	615	670	765	865	1,015	1,050	1,300	4,010	6,205

PS - Plastic Shaft Switch with IP20 / MS - Metal Shaft Switch

RISHCAM - MOFF (6 WAY)	Description	LP (INR)									
		CST2				CSS2				CSH2	
		6A (PS/MS)	10A	16A	20A	25A	32A	40A	63A	100A	200A
With OFF 45 Deg	1P 6W	260	265	490	540	580	665	690	1,100	-	-
	2P 6W	430	420	710	795	895	1,090	1,390	1,775	-	-

RISHCAM - MOFF (7 WAY)	Description	LP (INR)									
		CST2				CSS2				CSH2	
		6A (PS/MS)	10A	16A	20A	25A	32A	40A	63A	100A	200A
With OFF 45 Deg	1P 7W	270	440	525	580	660	685	710	1,090	-	-

RISHCAM - MOFF (8 WAY)	Description	LP (INR)									
		CST2				CSS2				CSH2	
		6A (PS/MS)	10A	16A	20A	25A	32A	40A	63A	100A	200A
With OFF 30 Deg	1P 8W	295	365	520	605	-	-	-	-	-	-

RISHCAM - MOFF (9 WAY)	Description	LP (INR)									
		CST2				CSS2				CSH2	
		6A (PS/MS)	10A	16A	20A	25A	32A	40A	63A	100A	200A
With OFF 30 Deg	1P 9W	305	440	520	645	-	-	-	-	-	-

RISHCAM - MOFF (10 WAY)	Description	LP (INR)									
		CST2				CSS2				CSH2	
		6A (PS/MS)	10A	16A	20A	25A	32A	40A	63A	100A	200A
With OFF 30 Deg	1P 10W	350	455	705	940	-	-	-	-	-	-

RISHCAM - MOFF (11 WAY)	Description	LP (INR)									
		CST2				CSS2				CSH2	
		6A (PS/MS)	10A	16A	20A	25A	32A	40A	63A	100A	200A
With OFF 30 Deg	1P 11W	425	500	650	800	-	-	-	-	-	-

RISHCAM - MWOFF (3 WAY)	Description	LP (INR)									
		CST2				CSS2				CSH2	
		6A (PS/MS)	10A	16A	20A	25A	32A	40A	63A	100A	200A
Without OFF 60 Deg	1P 3W	145	270	305	310	380	395	605	680	2,560	4,090
	2P 3W	220	400	430	565	700	685	760	895	4,510	5,790
	3P 3W	305	500	640	680	730	785	1,100	1,295	4,870	9,360
	4P 3W	390	555	735	835	915	965	2,110	2,360	5,220	10,220

RISHCAM - MWOFF (4 WAY)	Description	LP (INR)									
		CST2				CSS2				CSH2	
		6A (PS/MS)	10A	16A	20A	25A	32A	40A	63A	100A	200A
Without OFF 90 Deg	1P 4W	165	290	375	410	460	475	650	920	3,095	3,275
	2P 4W	240	430	440	505	540	590	795	1,010	4,670	7,730
	3P 4W	330	495	695	775	850	935	1,020	1,360	6,220	10,220

RISHCAM - MWOFF (5 WAY)	Description	LP (INR)									
		CST2				CSS2				CSH2	
		6A (PS/MS)	10A	16A	20A	25A	32A	40A	63A	100A	200A
Without OFF 60 Deg	1P 5W	190	305	400	460	500	640	810	1,020	2,755	3,970
	2P 5W	360	345	545	700	810	880	1,120	1,410	3,995	9,605

PS - Plastic Shaft Switch with IP20 / MS - Metal Shaft Switch

RISHCAM - MWOFF (6 WAY)	Description	LP (INR)									
		CST2				CSS2				CSH2	
		6A (PS/MS)	10A	16A	20A	25A	32A	40A	63A	100A	200A
Without OFF 60 Deg	1P 6W	210	260	505	535	570	660	760	960	4,490	8,670
	2P 6W	415	500	675	840	1,010	1,030	1,045	1,335	8,870	11,405

RISHCAM - MWOFF (7 WAY)	Description	LP (INR)									
		CST2				CSS2				CSH2	
		6A (PS/MS)	10A	16A	20A	25A	32A	40A	63A	100A	200A
Without OFF 45 Deg	1P 7W	260	330	380	525	675	680	810	1,200	-	-

RISHCAM - MWOFF (8 WAY)	Description	LP (INR)									
		CST2				CSS2				CSH2	
		6A (PS/MS)	10A	16A	20A	25A	32A	40A	63A	100A	200A
Without OFF 45 Deg	1P 8W	265	540	570	605	685	710	800	1,150	-	-

RISHCAM - MWOFF (9 WAY)	Description	LP (INR)									
		CST2				CSS2				CSH2	
		6A (PS/MS)	10A	16A	20A	25A	32A	40A	63A	100A	200A
Without OFF 30 Deg	1P 9W	305	435	895	635	-	-	-	-	-	-

RISHCAM - MWOFF (10 WAY)	Description	LP (INR)									
		CST2				CSS2				CSH2	
		6A (PS/MS)	10A	16A	20A	25A	32A	40A	63A	100A	200A
Without OFF 30 Deg	1P 10W	330	580	990	1,020	-	-	-	-	-	-

RISHCAM - MWOFF (11 WAY)	Description	LP (INR)									
		CST2				CSS2				CSH2	
		6A (PS/MS)	10A	16A	20A	25A	32A	40A	63A	100A	200A
Without OFF 30 Deg	1P 11W	575	605	645	820	-	-	-	-	-	-

RISHCAM - MWOFF (12 WAY)	Description	LP (INR)									
		CST2				CSS2				CSH2	
		6A (PS/MS)	10A	16A	20A	25A	32A	40A	63A	100A	200A
Without OFF 30 Deg	1P 12W	645	685	745	855	-	-	-	-	-	-

PS - Plastic Shaft Switch with IP20 / MS - Metal Shaft Switch



Compact Split Core CT

Group	Primary Current / Secondary Current	Class 1		Class 3	
		VA	LP (INR)	VA	LP (INR)
Compact Split Core CT 36-18					
XCS1	60/1A	-	-	0.2	1,325
	75/1A	-	-	0.2	1,335
	80/1A	-	-	0.2	1,340
	100/1A	-	-	0.2	1,345
Compact Split Core CT 50-18					
XCS2	100/1A	-	-	0.2	1,850
	125/1A	-	-	0.2	1,850
	150/1A	0.2	1,860	-	-
	150/5A	0.2	1,860	-	-
	200/1A	0.2	1,870	-	-
	200/5A	0.2	1,870	-	-
	250/1A	1	1,880	-	-
250/5A	1	1,880	-	-	
Compact Split Core CT 50-32					
XCS3	200/1A	-	-	0.2	1,870
	250/1A	0.2	1,880	-	-
	250/5A	0.2	1,880	-	-
	300/1A	0.2	1,890	-	-
	300/5A	0.2	1,890	-	-
	400/1A	0.2	1,900	-	-
	400/5A	0.2	1,900	-	-
	500/1A	0.2	1,910	-	-
	500/5A	0.2	1,910	-	-



3 Phase Nano CT

Secondary Current : 100mA

Description	Primary Current (A)	Class 0.5	
		VA	LP (INR)
X308 - CTB 3PH 65/8	63	0.1	645
X306 - CTB 3PH 90/15	125	0.1	680
X307 - CTB 3PH 116/26	250	0.1	785



3 Phase Nano CT with RJ12 connection

Secondary Current : 100mA

Description	Primary Current (A)	Class 0.5	
		VA	LP (INR)
X308 - CTB 3PH RJ12 65/8	63	0.1	745
X306 - CTB 3PH RJ12 90/15	125	0.1	780
X307 - CTB 3PH RJ12 116/26	250	0.1	885

Note :- Above CTs will be supplied with integrated cable length of 2 meters



3 in 1 CT with RJ12 connection Secondary Current : 100mA

KMAT	Description	Primary Current (A)	Class 1	
			VA	LP (INR)
XRJ1	CTB 3PH RJ12 75mm wide	60	0.25	885
	CTB 3PH RJ12 75mm wide	100	0.25	930
	CTB 3PH RJ12 75mm wide	125	0.25	940
	CTB 3PH RJ12 75mm wide	160	0.25	950
XRJ2	CTB 3PH RJ12 105mm wide	60	0.25	950
	CTB 3PH RJ12 105mm wide	100	0.25	970
	CTB 3PH RJ12 105mm wide	125	0.35	975
	CTB 3PH RJ12 105mm wide	160	0.50	980
XRJ3	CTB 3PH RJ12 140mm wide	250	0.25	1,030
	CTB 3PH RJ12 140mm wide	400	0.25	1,050
	CTB 3PH RJ12 140mm wide	630	0.25	1,090
XRJ4	CTB 3PH RJ12 215mm wide	750	0.50	1,110
	CTB 3PH RJ12 215mm wide	800	0.50	1,130

Note :- Above CTs will be supplied with detachable cable length of 2 meters



3 Phase CTs

Standard Secondary current: 5A

Group	Primary Current (A)	Class 0.5		Class 1		Class 3	
		VA	LP (INR)	VA	LP (INR)	VA	LP (INR)
Rish Xmer 3 PH 75/15(60)							
X301	100	-	-	1	1,080	2.5	975
	125	-	-	1.5	1,080	2.5	1,015
	150	1.5	1,080	1.5	1,080	2.5	1,070
	160	1.5	1,100	1.5	1,090	2.5	1,080
Rish Xmer 3 PH 105/21(40)							
X302	100	-	-	1	755	2	750
	125	-	-	1.5	775	2.5	770
	150	-	-	1.5	785	2.5	775
	160	1.5	805	1.5	795	2.5	785
	200	1.5	845	1.5	830	2.5	825
X303	250	1.5	890	1.5	880	2.5	870
	300	2.5	900	2.5	895	3.75	885
	400	2.5	895	2.5	895	3.75	890
	500	2.5	940	2.5	930	3.75	925
Rish Xmer 3 PH 140/31(40)							
X303	250	1.5	880	1.5	870	2.5	865
	300	2.5	900	2.5	895	3.75	885
	400	2.5	895	2.5	895	3.75	890
	500	2.5	940	2.5	930	3.75	925
Rish Xmer 3 PH 185/27(45)							
X304	40	-	-	-	-	1.25	810
	60	-	-	-	-	1.5	830
	80	-	-	-	-	1.5	840
	100	-	-	1.5	865	1.5	855
	150	-	-	1.5	910	1.5	895
	200	-	-	2.5	970	2.5	960
	250	-	-	2.5	1,050	2.5	1,035
	300	-	-	5	1,100	5	1,085
	400	-	-	5	1,135	5	1,120
500	-	-	5	1,185	5	1,140	
Rish Xmer 3 PH 185/37(45)							
X305	300	-	-	2.5	740	2.5	730
	400	-	-	5	800	5	785
	500	-	-	5	910	5	890
	600	-	-	5	930	5	920
	800	-	-	5	960	5	960

Notes :-

1. Please add INR 290 for 1A secondary current (Before ordering, please check feasibility with local sales office)
2. Please add INR 90 for Busbar Mounting Kit
3. Please add INR 70 for DIN rail Mounting Kit
4. For any non-standard item, please contact local sales office



Split Core CTs

Standard Secondary current: 5A

Group	Primary Current (A)	Class 0.5		Class 1		Class 3	
		VA	LP (INR)	VA	LP (INR)	VA	LP (INR)
Rish Xmer 93/30SC (40)							
XS01	100	-	-	1.5	1,350	3.5	1,350
	150	-	-	1.75	1,350	3.75	1,350
	200	-	-	2.5	1,350	5	1,350
	250	-	-	3.75	1,630	6.25	1,630
	300	2.5	1,650	5	1,630	6.25	1,630
	400	3.75	1,650	6.25	1,630	10	1,630
Rish Xmer 105/50SC (50)							
XS05	100	-	-	1.5	2,950	-	-
	125	-	-	1.5	2,980	-	-
	150	-	-	1.75	3,005	-	-
	200	1.5	3,045	3.75	3,045	-	-
	250	2.5	3,100	5	3,100	-	-
	300	2.5	3,150	5	3,150	-	-
	400	5	3,245	7.5	3,245	-	-
	500	5	3,335	7.5	3,335	-	-
	600	6.25	3,430	10	3,430	-	-
	800	7.5	3,630	12.5	3,630	-	-
Rish Xmer 125/50SC (40)							
XS02	250	1	1,855	2.5	1,855	-	-
	300	2.5	1,855	3.75	1,855	-	-
	400	2.5	1,855	3.75	1,855	-	-
	500	3.75	1,855	5	1,855	-	-
	600	5	1,950	7.5	1,950	-	-
	750	7.5	1,950	10	1,950	-	-
	800	7.5	1,950	10	1,950	-	-
	1000	10	1,950	15	1,950	-	-
	1200	10	2,190	15	2,190	-	-
	1250	10	2,190	15	2,190	-	-
	1500	10	2,440	15	2,440	-	-
	1600	10	2,440	15	2,440	-	-
2000	10	2,680	15	2,680	-	-	
Rish Xmer 155/80SC (40)							
XS03	250	1.0	3,020	2.5	3,020	-	-
	300	2.5	3,020	3.75	3,020	-	-
	400	2.5	3,020	3.75	3,020	-	-
	500	3.75	3,020	5	3,020	-	-
	600	5	3,020	7.5	3,020	-	-
	750	7.5	3,020	10	3,020	-	-
	800	7.5	3,160	10	3,160	-	-
	1000	10	3,160	15	3,160	-	-
	1200	15	3,160	30	3,160	-	-
	1250	15	3,160	30	3,160	-	-
	1500	20	3,160	45	3,160	-	-
	1600	20	3,160	45	3,160	-	-
	2000	20	4,110	45	4,110	-	-
	2500	25	4,110	45	4,110	-	-
	3000	30	4,110	45	4,110	-	-
Rish Xmer 195/80SC (64)							
XS04	500	1.25	4,285	5	4,285	-	-
	600	1.25	4,285	5	4,285	-	-
	750	5	4,285	10	4,285	-	-
	800	7.5	4,480	10	4,480	-	-
	1000	10	4,480	20	4,480	-	-
	1200	15	4,620	20	4,620	-	-
	1250	15	4,620	20	4,620	-	-
	1500	20	4,865	30	4,865	-	-
	1600	20	4,865	30	4,865	-	-
	2000	25	5,105	30	5,105	-	-
	2500	25	5,105	30	5,105	-	-
	3000	30	5,105	45	5,105	-	-
	4000	30	5,355	45	5,355	-	-
	5000	30	5,355	45	5,355	-	-

Notes :

1. Please add INR 120 for 1A secondary current (Before ordering, please check feasibility with local sales office)
2. For any non-standard item, please contact local sales office



Resin Cast CT
Standard Secondary current : 5A

Group	Primary Current (A)	Type OD/ID (Axial)	Class 0.5		Class 1.0	
			VA	LP (INR)	VA	LP (INR)
LTRC-1 80/30(50)						
XRC1	60	80/30(50)	-	-	1.5	670
	100	80/30(50)	2.5	740	5	670
	125	80/30(50)	2.5	765	5	695
	150	80/30(50)	3.75	780	5	705
	160	80/30(50)	3.75	785	5	710
LTRC-2 90/50(40)						
XRC2	200	90/50(40)	3.75	625	7.5	565
	250	90/50(40)	3.75	710	10	645
	300	90/50(40)	5	710	10	645
	320	90/50(40)	5	710	10	645
LTRC-3 110/72(40)						
XRC3	400	110/72(40)	5	740	10	670
	500	110/72(40)	7.5	770	15	700
	600	110/72(40)	15	795	15	720
	630	110/72(40)	15	800	15	725
LTRC-4 135/85(40)						
XRC4	800	135/85(40)	15	845	15	765
	1,000	135/85(40)	15	900	15	815
	1,200	135/85(40)	15	950	15	860
LTRC-5 165/115(40)						
XRC5	1,500	165/115(40)	15	1,135	15	1,030
	1,600	165/115(40)	15	1,210	15	1,100
	2,000	165/115(40)	15	1,345	15	1,220
LTRC-6 195/130(40)						
XRC6	2,500	195/130(40)	15	1,785	15	1,620
	3,000	195/130(40)	15	1,915	15	1,740
	3,200	195/130(40)	15	2,300	15	2,090
LTRC-7 230/165(40)						
XRC7	3,000	230/165(40)	15	2,400	15	2,180
	3,200	230/165(40)	15	2,500	15	2,270
LTRC-8 295/200(40)						
XRC8	4,000	295/200(40)	15	3,320	15	3,015
	5,000	295/200(40)	15	4,235	15	3,850

Note :

- Please add INR 120 for 1A secondary current (Before ordering, please check feasibility with local sales office)
- For any non-standard item, please contact local sales office



Resin Cast CT - Protection Class

Group	Primary Current (A)	Type OD/ID (Axial)	5A Secondary			1A Secondary		
			VA	Class	LP (INR)	VA	Class	LP (INR)
LTRC-1 80/30(50)								
XRC1	100	80/30(50)	1.5	5P5	1,070	1.5	5P5	1,170
	125	80/30(50)	1.5	5P5	1,070	1.5	5P5	1,175
	150	80/30(50)	1	5P10	1,145	1	5P10	1,260
	160	80/30(50)	1	5P10	1,145	1.25	5P10	1,260
LTRC-2 90/50(40)								
XRC2	200	90/50(40)	1.25	5P5	1,480	1.5	5P5	1,630
	250	90/50(40)	1.5	5P5	1,480	2.5	5P5	1,630
	300	90/50(40)	1.5	5P5	1,490	1	5P10	1,640
	320	90/50(40)	1.5	5P5	1,500	1	5P10	1,645
LTRC-3 110/72(40)								
XRC3	400	110/72(40)	1	5P5	1,505	1	5P5	1,655
	500	110/72(40)	1	5P5	1,510	1.5	5P5	1,660
	600	110/72(40)	1.5	5P5	1,515	1.75	5P5	1,665
	630	110/72(40)	1.5	5P5	1,520	1.75	5P5	1,670
LTRC-4 135/85(40)								
XRC4	800	135/85(40)	2.5	5P5	1,785	1.75	5P10	1,965
	1000	135/85(40)	3.75	5P5	1,785	1.75	5P10	1,965
	1200	135/85(40)	5	5P5	1,825	2.5	5P10	2,010
	1250	135/85(40)	5	5P5	1,860	2.5	5P10	2,045
LTRC-5 165/115(40)								
XRC5	1250	165/115(40)	2.5	5P5	2,595	1.75	5P10	2,855
	1500	165/115(40)	3.75	5P5	2,595	2.5	5P10	2,855
	1600	165/115(40)	5	5P5	2,595	2.5	5P10	2,855
	2000	165/115(40)	6.25	5P5	2,625	2.5	5P10	2,890
LTRC-6 195/130(40)								
XRC6	2500	195/130(40)	3.75	5P10	3,540	5	5P10	3,890
	3000	195/130(40)	3.75	5P10	3,540	6.25	5P10	3,890
	3200	195/130(40)	3.75	5P10	3,540	7.5	5P10	3,890
LTRC-7 230/165(40)								
XRC7	3000	230/165(40)	3.75	5P10	3,875	5	5P10	4,260
	3200	230/165(40)	3.75	5P10	3,875	5	5P10	4,260
LTRC-8 295/200(40)								
XRC8	4000	295/200(40)	10	5P10	5,155	15	5P10	5,670
	5000	295/200(40)	10	5P10	5,860	20	5P10	6,445

Note :

- Please add INR 120 for 1A secondary current (Before ordering, please check feasibility with local sales office)
- For any non-standard item, please contact local sales office

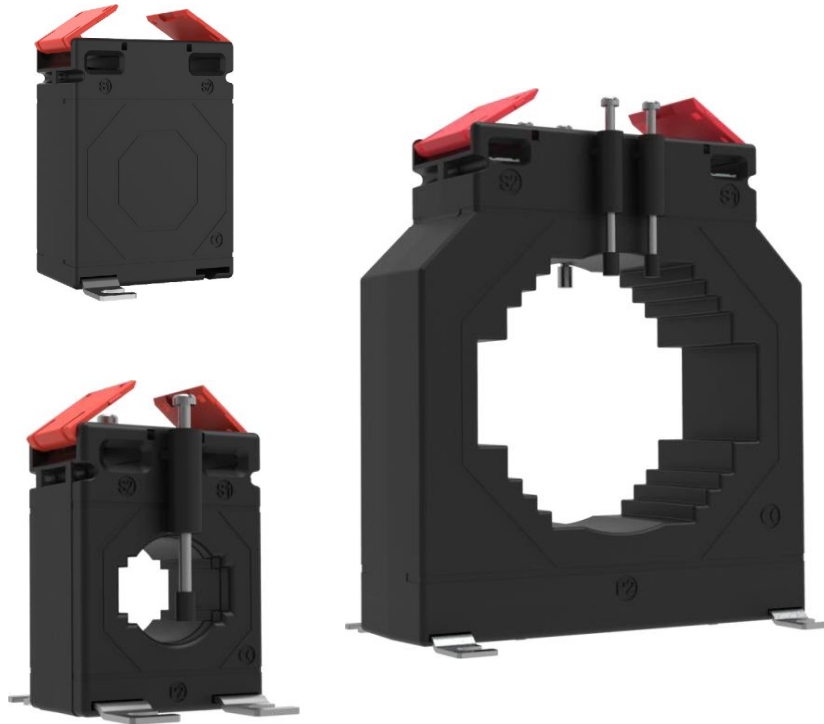


Wound Primary Type : Rish Xmer
Standard Secondary current: 5A

Group	Primary Current (A)	Class 0.2		Class 0.5		Class 1	
		VA	LP (INR)	VA	LP (INR)	VA	LP (INR)
Rish Xmer 62/W							
XW01	1	1	490	2.5	460	5	435
	2.5	1	490	2.5	460	5	435
	5	1	490	2.5	460	5	435
	7.5	1	490	2.5	460	5	435
	10	1	490	2.5	460	5	435
	15	1	490	2.5	460	5	435
	20	1	490	2.5	460	5	435
	25	1	490	2.5	460	5	435
	30	1	490	2.5	460	5	435
Rish Xmer 74/W							
XW02	1	1.5	615	5	570	10	540
	2.5	1.5	615	5	570	10	540
	5	1.5	615	5	570	10	540
	7.5	1.5	615	5	570	10	540
	10	1.5	615	5	570	10	540
	15	1.5	615	5	570	10	540
	20	1.5	615	5	570	10	540
	25	1.5	615	5	570	10	540
	30	1.5	615	5	570	10	540
	40	1.5	615	5	570	10	540
	50	1.5	615	5	570	10	540
	60	1.5	615	5	570	10	540

Note :

- Please add INR 120 for 1A secondary current (Before ordering, please check feasibility with local sales office)
- For any non-standard item, please contact local sales office



Busbar Type : Rish Xmer
Standard Secondary current: 5A

Group	Primary Current (A)	Type OD/ID (Axial)	Class 0.5		Class 1	
			VA	LP (INR)	VA	LP (INR)
Rish Xmer 45/14 (40)						
XM01	30	45/14 (40)	-	-	1	455
	40	45/14 (40)	-	-	1	440
	50	45/14 (40)	-	-	1.5	280
	60	45/14 (40)	-	-	1.5	280
	75	45/14 (40)	1.5	295	2.5	285
	80	45/14 (40)	1.5	295	2.5	285
	100	45/14 (40)	1.5	300	3.75	295
	120	45/14 (40)	2.5	305	3.75	295
	125	45/14 (40)	2.5	305	3.75	295
	150	45/14 (40)	2.5	355	5	295
	200	45/14 (40)	3.75	380	7.5	355
	250	45/14 (40)	5	405	7.5	370
300	45/14 (40)	5	415	10	395	
Rish Xmer 45/21 (40)						
XM02	50	45/21 (40)	-	-	1.5	310
	60	45/21 (40)	-	-	1.5	310
	75	45/21 (40)	-	-	2.5	310
	80	45/21 (40)	1	310	2.5	310
	100	45/21 (40)	1.5	325	3.75	325
	120	45/21 (40)	1.5	325	3.75	325
	125	45/21 (40)	2.5	325	3.75	325
	150	45/21 (40)	2.5	340	5	340
	200	45/21 (40)	3.75	340	5	340
	250	45/21 (40)	5	340	5	340
	300	45/21 (40)	5	360	5	340
	400	45/21 (40)	5	385	5	370
Rish Xmer 50/14 (30)						
XM03	40	50/14 (30)	-	-	1	295
	50	50/14 (30)	-	-	1.5	280
	60	50/14 (30)	-	-	1.5	285
	75	50/14 (30)	-	-	1.5	260
	80	50/14 (30)	-	-	1.5	260
	100	50/14 (30)	2.5	330	3.75	285
	120	50/14 (30)	2.5	360	3.75	300
	125	50/14 (30)	2.5	360	3.75	300
	150	50/14 (30)	3.75	365	5	305
	200	50/14 (30)	3.75	380	5	325
	250	50/14 (30)	5	395	7.5	335
	300	50/14 (30)	7.5	410	7.5	350
Rish Xmer 50/14 (50)						
XM04	30	50/14 (50)	-	-	1	530
	40	50/14 (50)	-	-	1	515
	50	50/14 (50)	1.5	540	1.5	515
	60	50/14 (50)	1.5	540	1.5	515
	75	50/14 (50)	2.5	540	5	540
	80	50/14 (50)	2.5	490	5	490
	100	50/14 (50)	3.75	520	5	420
	120	50/14 (50)	3.75	435	5	430
	125	50/14 (50)	3.75	435	5	430
	150	50/14 (50)	5	460	7.5	460
	200	50/14 (50)	7.5	460	10	460
	250	50/14 (50)	10	520	12.5	490
	300	50/14 (50)	10	590	12.5	490

Busbar Type : Rish Xmer
Standard Secondary current: 5A

Group	Primary Current (A)	Type OD/ID (Axial)	Class 0.5		Class 1	
			VA	LP (INR)	VA	LP (INR)
Rish Xmer 50/21 (30)						
XM05	50	50/21 (30)	-	-	1	260
	60	50/21 (30)	-	-	1	260
	75	50/21 (30)	-	-	1.5	260
	80	50/21 (30)	1	365	2.5	260
	100	50/21 (30)	1.5	370	2.5	270
	120	50/21 (30)	2.5	330	2.5	270
	125	50/21 (30)	2.5	335	3.75	275
	150	50/21 (30)	2.5	340	5	285
	200	50/21 (30)	3.75	350	5	290
	250	50/21 (30)	5	355	5	295
	300	50/21 (30)	5	365	7.5	305
400	50/21 (30)	5	400	7.5	340	
Rish Xmer 50/21 (50)						
XM06	50	50/21 (50)	1	520	2.5	520
	60	50/21 (50)	1.5	520	3.75	520
	75	50/21 (50)	1.5	520	3.75	490
	80	50/21 (50)	2.5	520	5	520
	100	50/21 (50)	2.5	525	5	490
	120	50/21 (50)	3.75	530	5	500
	125	50/21 (50)	5	535	5	510
	150	50/21 (50)	5	540	10	530
	200	50/21 (50)	10	545	12.5	535
	250	50/21 (50)	10	550	15	540
	300	50/21 (50)	7.5	555	12.5	545
400	50/21 (50)	10	560	15	550	
Rish Xmer 50/30 (30)						
XM07	75	50/30 (30)	-	-	1	260
	80	50/30 (30)	-	-	1.5	260
	100	50/30 (30)	1	285	2.5	265
	120	50/30 (30)	1	280	2.5	265
	125	50/30 (30)	1	285	2.5	270
	150	50/30 (30)	2.5	285	3.75	270
	200	50/30 (30)	2.5	300	5	285
	250	50/30 (30)	5	320	5	300
	300	50/30 (30)	5	325	5	305
	400	50/30 (30)	5	330	6.25	310
	500	50/30 (30)	5	335	6.25	315
600	50/30 (30)	5	340	7.5	320	
Rish Xmer 50/30 (50)						
XM08	50	50/30 (50)	-	-	1.5	375
	60	50/30 (50)	-	-	1.5	380
	75	50/30 (50)	-	-	2.5	385
	80	50/30 (50)	-	-	2.5	385
	100	50/30 (50)	1	445	3.75	400
	120	50/30 (50)	2.5	445	5	405
	125	50/30 (50)	2.5	445	5	405
	150	50/30 (50)	5	435	5	405
	200	50/30 (50)	5	450	7.5	415
	250	50/30 (50)	5	470	10	415
	300	50/30 (50)	5	475	10	435
	400	50/30 (50)	10	510	12.5	445
	500	50/30 (50)	10	545	12.5	460
600	50/30 (50)	10	580	15	490	

Busbar Type : Rish Xmer
Standard Secondary current: 5A

Group	Primary Current (A)	Type OD/ID (Axial)	Class 0.2s		Class 0.2		Class 0.5		Class 1	
			VA	LP (INR)	VA	LP (INR)	VA	LP (INR)	VA	LP (INR)
Rish Xmer 62/R										
XM09	50	62/R	-	-	-	-	-	-	1.5	385
	60	62/R	-	-	-	-	-	-	2.5	390
	75	62/R	-	-	-	-	1.5	575	2.5	470
	80	62/R	-	-	-	-	2.5	580	2.5	470
	100	62/R	-	-	1.5	615	2.5	590	5	525
	120	62/R	-	-	1.5	630	3.75	595	5	530
	125	62/R	-	-	1.5	635	3.75	600	5	535
	150	62/R	2.5	1,155	2.5	640	5	615	7.5	545
	200	62/R	5	1,155	5	665	7.5	630	10	565
	250	62/R	5	1,155	5	685	10	650	15	580
	300	62/R	5	1,155	5	725	10	675	15	600
	400	62/R	5	1,155	10	760	15	710	15	640
500	62/R	-	-	10	790	15	750	15	685	
600	62/R	-	-	10	805	15	770	15	710	
Rish Xmer 62/20 (40)										
XM10	50	62/20 (40)	-	-	-	-	-	-	1.5	385
	60	62/20 (40)	-	-	-	-	-	-	2.5	390
	75	62/20 (40)	-	-	-	-	1.5	575	3.75	515
	80	62/20 (40)	-	-	-	-	2.5	580	3.75	515
	100	62/20 (40)	1.5	1,275	1.5	645	2.5	590	5	525
	120	62/20 (40)	1.5	1,275	1.5	645	3.75	595	5	530
	125	62/20 (40)	1.5	1,275	1.5	645	3.75	600	5	535
	150	62/20 (40)	2.5	1,275	2.5	640	5	615	7.5	545
	200	62/20 (40)	3.75	1,275	5	650	7.5	630	10	565
	250	62/20 (40)	3.75	1,275	5	670	10	650	15	580
	300	62/20 (40)	5	1,275	5	690	10	675	15	600
	400	62/20 (40)	5	1,275	10	730	15	710	15	640
500	62/20 (40)	5	1,275	10	730	15	710	15	640	
Rish Xmer 62/30 (40)										
XM11	50	62/30 (40)	-	-	-	-	-	-	1.25	400
	60	62/30 (40)	-	-	-	-	-	-	1.5	400
	75	62/30 (40)	-	-	-	-	-	-	2.5	400
	80	62/30 (40)	-	-	-	-	-	-	2	400
	100	62/30 (40)	1	1,260	1	460	1.5	455	3.75	405
	120	62/30 (40)	1	1,260	1	470	2.5	460	3.75	410
	125	62/30 (40)	1	1,260	1	470	2.5	460	3.75	415
	150	62/30 (40)	2.5	1,260	1.5	475	3.75	470	7.5	425
	200	62/30 (40)	5	1,260	3.75	490	5	480	10	435
	250	62/30 (40)	5	1,260	5	510	5	495	10	460
	300	62/30 (40)	5	1,260	3.75	525	10	515	15	470
	400	62/30 (40)	5	1,260	10	565	12.5	550	15	505
	500	62/30 (40)	5	1,260	10	570	12.5	560	15	510
	600	62/30 (40)	7.5	1,260	10	600	15	575	20	530
750	62/30 (40)	10	1,260	10	630	15	590	15	545	
800	62/30 (40)	10	1,260	10	630	15	590	15	560	
Rish Xmer 62/30 (50)										
XM12	50	62/30 (50)	-	-	-	-	-	-	1.5	590
	60	62/30 (50)	-	-	-	-	-	-	2.5	590
	75	62/30 (50)	-	-	-	-	2.5	615	2.5	590
	80	62/30 (50)	-	-	-	-	2.5	615	3.75	590
	100	62/30 (50)	1.25	1,300	1.25	665	2.5	645	5	615
	120	62/30 (50)	1.25	1,300	1.25	665	5	645	5	615
	125	62/30 (50)	1.25	1,300	1.25	665	5	645	5	615
	150	62/30 (50)	2.5	1,300	2	690	5	645	7.5	615
	200	62/30 (50)	5	1,300	3.75	690	10	645	15	615
	250	62/30 (50)	5	1,300	5	700	15	665	15	630
	300	62/30 (50)	5	1,300	5	700	15	665	15	630
	400	62/30 (50)	10	1,300	6.25	720	15	675	30	645
	500	62/30 (50)	10	1,300	7.5	730	15	700	30	675
	600	62/30 (50)	10	1,300	10	760	20	730	30	700
750	62/30 (50)	10	1,300	10	845	20	805	30	780	
800	62/30 (50)	10	1,300	10	880	20	820	30	790	

Metering Current Transformers



Busbar Type : Rish Xmer
Standard Secondary current: 5A

Group	Primary Current (A)	Type OD/ID (Axial)	Class 0.2s		Class 0.2		Class 0.5		Class 1	
			VA	LP (INR)	VA	LP (INR)	VA	LP (INR)	VA	LP (INR)
Rish Xmer 62/40 (40)										
XM13	100	62/40 (40)	-	-	-	-	-	-	1.5	290
	120	62/40 (40)	-	-	-	-	-	-	1.5	295
	125	62/40 (40)	-	-	-	-	-	-	1.5	295
	150	62/40 (40)	-	-	-	-	-	-	2.5	300
	200	62/40 (40)	1	1,230	1	355	1.5	340	3.75	320
	250	62/40 (40)	1.5	1,230	1.5	365	2.5	355	5	335
	300	62/40 (40)	1.5	1,230	1.5	380	5	365	5	340
	400	62/40 (40)	2.5	1,230	2.5	410	5	395	5	340
	500	62/40 (40)	2.5	1,230	5	415	5	400	7.5	340
	600	62/40 (40)	3.75	1,230	7.5	430	7.5	405	10	340
750	62/40 (40)	5	1,230	10	435	10	405	10	340	
800	62/40 (40)	5	1,230	10	445	10	415	10	340	
Rish Xmer 74/20 (45)										
XM14	40	74/20 (45)	-	-	-	-	-	-	1.5	840
	50	74/20 (45)	-	-	-	-	1	920	2.5	840
	60	74/20 (45)	-	-	-	-	1	920	3.75	845
	75	74/20 (45)	-	-	-	-	1.5	920	5	845
	80	74/20 (45)	-	-	-	-	2.5	920	5	845
	100	74/20 (45)	1.5	1,360	1.5	810	5	780	7.5	760
	120	74/20 (45)	1.5	1,360	1.5	820	5	795	10	765
	125	74/20 (45)	1.5	1,360	1.5	840	5	810	10	765
	150	74/20 (45)	2.5	1,360	2.5	870	7.5	840	12.5	800
	200	74/20 (45)	5	1,360	5	710	10	680	15	615
	250	74/20 (45)	5	1,360	5	715	10	695	15	630
	300	74/20 (45)	5	1,360	7.5	720	15	695	15	640
	400	74/20 (45)	5	1,360	10	745	15	715	20	675
500	74/20 (45)	5	1,360	10	745	15	715	15	675	
Rish Xmer 74/30 (45)										
XM15	40	74/30 (45)	-	-	-	-	-	-	1.5	745
	50	74/30 (45)	-	-	-	-	-	-	1.5	750
	60	74/30 (45)	-	-	-	-	-	-	2.5	750
	75	74/30 (45)	-	-	-	-	1.5	860	2.5	750
	80	74/30 (45)	-	-	-	-	1.5	765	3.75	750
	100	74/30 (45)	1.5	1,405	1.5	785	2.5	765	5	750
	120	74/30 (45)	1.5	1,405	1.5	630	2.5	610	5	550
	125	74/30 (45)	1.5	1,405	1.5	635	2.5	615	5	570
	150	74/30 (45)	1.5	1,405	1.5	605	5	590	7.5	580
	200	74/30 (45)	2.5	1,405	2.5	665	10	675	15	660
	250	74/30 (45)	2.5	1,405	2.5	690	10	680	15	660
	300	74/30 (45)	5	1,405	5	705	10	690	15	670
	400	74/30 (45)	5	1,405	7.5	770	15	745	20	690
	500	74/30 (45)	5	1,405	10	775	15	750	20	700
	600	74/30 (45)	5	1,405	15	780	15	760	20	715
750	74/30 (45)	7.5	1,405	20	885	20	860	30	790	
800	74/30 (45)	10	1,405	30	900	30	880	30	810	
Rish Xmer 74/40 (45)										
XM16	40	74/40 (45)	-	-	-	-	-	-	1	515
	50	74/40 (45)	-	-	-	-	-	-	1.5	520
	60	74/40 (45)	-	-	-	-	-	-	1.5	530
	75	74/40 (45)	-	-	-	-	-	-	2.5	530
	80	74/40 (45)	-	-	-	-	-	-	2.5	530
	100	74/40 (45)	1	1,480	-	-	1.5	610	3.75	540
	120	74/40 (45)	1	1,480	-	-	1.5	615	2.5	550
	125	74/40 (45)	1	1,480	-	-	1.5	555	2.5	550
	150	74/40 (45)	1.5	1,480	1	595	3.75	565	5	550
	200	74/40 (45)	2.5	1,480	2.5	610	5	580	10	555
	250	74/40 (45)	5	1,480	3.75	610	5	580	10	560
	300	74/40 (45)	5	1,480	5	615	10	585	15	565
	400	74/40 (45)	5	1,480	10	655	10	625	15	570
	500	74/40 (45)	5	1,480	10	685	15	655	20	595
	600	74/40 (45)	5	1,480	15	710	15	680	20	610
	750	74/40 (45)	5	1,480	15	715	15	680	20	615
	800	74/40 (45)	7.5	1,480	15	715	15	680	20	615
1000	74/40 (45)	10	1,480	15	720	15	685	20	620	

Busbar Type : Rish Xmer
Standard Secondary current: 5A

Group	Primary Current (A)	Type OD/ID (Axial)	Class 0.2s		Class 0.2		Class 0.5		Class 1	
			VA	LP (INR)	VA	LP (INR)	VA	LP (INR)	VA	LP (INR)
Rish Xmer 74/50 (45)										
XM17	100	74/50 (45)	-	-	-	-	-	-	1.5	395
	120	74/50 (45)	-	-	-	-	-	-	1.5	405
	125	74/50 (45)	-	-	-	-	-	-	1.5	405
	150	74/50 (45)	-	-	-	-	-	-	2.5	415
	200	74/50 (45)	-	-	-	-	1.5	485	3.75	435
	250	74/50 (45)	1.5	1,555	1.5	515	2.5	485	5	445
	300	74/50 (45)	1.5	1,555	1.5	535	5	505	7.5	470
	400	74/50 (45)	2.5	1,555	2.5	535	5	505	7.5	475
	500	74/50 (45)	5	1,555	5	540	7.5	510	10	490
	600	74/50 (45)	5	1,555	7.5	550	10	520	12.5	510
750	74/50 (45)	5	1,555	10	585	12.5	555	15	520	
800	74/50 (45)	7.5	1,555	10	595	12.5	565	15	540	
1000	74/50 (45)	10	1,555	10	645	12.5	615	15	580	
Rish Xmer 86/40 (45)										
XM18	50	86/40 (45)	-	-	-	-	-	-	1.5	670
	60	86/40 (45)	-	-	-	-	-	-	1.5	670
	75	86/40 (45)	-	-	-	-	-	-	2.5	675
	80	86/40 (45)	-	-	-	-	-	-	2.5	675
	100	86/40 (45)	1.5	1,630	1.5	675	2.5	675	5	675
	120	86/40 (45)	1.5	1,630	1.5	690	2.5	675	5	675
	125	86/40 (45)	1.5	1,630	1.5	690	2.5	675	5	675
	150	86/40 (45)	2.5	1,630	2.5	655	5	600	10	555
	200	86/40 (45)	5	1,630	2.5	630	7.5	620	15	585
	250	86/40 (45)	10	1,630	5	690	7.5	675	15	610
	300	86/40 (45)	10	1,630	10	715	15	710	15	635
	400	86/40 (45)	10	1,630	15	750	15	740	20	670
	500	86/40 (45)	5	1,630	15	780	30	775	30	700
	600	86/40 (45)	7.5	1,630	15	800	30	790	30	715
750	86/40 (45)	7.5	1,630	15	840	30	835	30	765	
800	86/40 (45)	10	1,630	15	860	30	835	30	630	
1000	86/40 (45)	10	1,630	15	875	30	835	30	680	
Rish Xmer 86/50 (45)										
XM19	100	86/50 (45)	-	-	-	-	1	590	1.5	525
	120	86/50 (45)	-	-	-	-	1.5	590	2.5	530
	125	86/50 (45)	-	-	-	-	1.5	595	2.5	535
	150	86/50 (45)	-	-	-	-	2.5	600	5	540
	200	86/50 (45)	2.5	1,700	1	625	5	625	7.5	560
	250	86/50 (45)	2.5	1,700	1.5	625	7.5	640	10	575
	300	86/50 (45)	5	1,700	3.75	625	7.5	580	10	575
	400	86/50 (45)	7.5	1,700	10	635	15	580	15	575
	500	86/50 (45)	7.5	1,700	10	590	15	580	20	580
	600	86/50 (45)	10	1,700	15	615	15	580	20	585
	750	86/50 (45)	7.5	1,700	15	620	15	590	20	590
	800	86/50 (45)	10	1,700	12.5	730	20	700	30	645
	1000	86/50 (45)	12.5	1,700	20	780	30	750	30	700
1200	86/50 (45)	12.5	1,700	20	725	30	700	30	655	
1250	86/50 (45)	12.5	1,700	20	740	30	710	30	675	
Rish Xmer 86/60 (45)										
XM20	100	86/60 (45)	-	-	-	-	-	-	1	520
	120	86/60 (45)	-	-	-	-	-	-	1.5	485
	125	86/60 (45)	-	-	-	-	-	-	2.5	485
	150	86/60 (45)	-	-	-	-	-	-	2.5	490
	200	86/60 (45)	-	-	-	-	1.5	570	3.75	515
	250	86/60 (45)	-	-	-	-	2.5	580	5	530
	300	86/60 (45)	2.5	1,700	1.5	640	5	600	7.5	545
	400	86/60 (45)	3.75	1,700	2.5	665	10	625	12.5	570
	500	86/60 (45)	5	1,700	3.75	665	10	625	15	575
	600	86/60 (45)	5	1,700	5	665	15	625	15	580
	750	86/60 (45)	5	1,700	10	710	15	670	20	615
	800	86/60 (45)	7.5	1,700	12.5	730	20	690	20	630
	1000	86/60 (45)	10	1,700	15	760	20	720	30	680
	1200	86/60 (45)	10	1,700	15	770	20	730	30	730
	1250	86/60 (45)	10	1,700	15	820	20	780	20	740
	1500	86/60 (45)	10	1,700	15	860	20	820	20	775
1600	86/60 (45)	10	1,700	15	885	20	845	20	800	

Metering Current Transformers



Busbar Type : Rish Xmer
Standard Secondary current: 5A

Group	Primary Current (A)	Type OD/ID (Axial)	Class 0.2s		Class 0.2		Class 0.5		Class 1	
			VA	LP (INR)	VA	LP (INR)	VA	LP (INR)	VA	LP (INR)
Rish Xmer 100/100V (45)										
XR01	400	100/100V (45)	-	-	-	-	2.5	885	5	800
	500	100/100V (45)	-	-	-	-	2.5	905	5	820
	600	100/100V (45)	-	-	-	-	2.5	930	5	840
	750	100/100V (45)	-	-	-	-	2.5	960	5	880
	800	100/100V (45)	-	-	-	-	5	970	10	890
	1000	100/100V (45)	-	-	5	1,040	10	1,020	15	935
	1200	100/100V (45)	5	1,450	5	1,085	10	1,065	15	985
	1250	100/100V (45)	5	1,450	5	1,125	10	1,075	15	995
	1500	100/100V (45)	5	1,450	5	1,165	15	1,145	30	1,050
	1600	100/100V (45)	7.5	1,450	10	1,245	15	1,160	30	1,095
2000	100/100V (45)	7.5	1,450	10	1,280	15	1,260	30	1,100	
2500	100/100V (45)	10	1,450	10	1,375	15	1,340	20	1,120	
Rish Xmer 100/130V (45)										
XR02	400	100/130V(45)	-	-	-	-	2.5	945	5	850
	500	100/130V(45)	-	-	-	-	2.5	990	5	890
	600	100/130V(45)	-	-	-	-	2.5	1,040	5	935
	750	100/130V(45)	-	-	-	-	2.5	1,100	5	995
	800	100/130V(45)	-	-	-	-	5	1,140	10	1,025
	1000	100/130V(45)	-	-	-	-	10	1,215	15	1,105
	1200	100/130V(45)	-	-	-	-	10	1,295	15	1,180
	1250	100/130V(45)	-	-	-	-	10	1,335	15	1,220
	1500	100/130V(45)	-	-	5	1,460	15	1,435	30	1,315
	1600	100/130V(45)	-	-	5	1,515	15	1,495	30	1,370
	2000	100/130V(45)	-	-	5	1,680	15	1,540	30	1,385
	2500	100/130V(45)	-	-	5	1,855	15	1,560	30	1,415
	3000	100/130V(45)	-	-	5	1,895	10	1,590	12.5	1,405
3200	100/130V(45)	-	-	5	1,895	10	1,590	12.5	1,420	
Rish Xmer 104/60 (45)										
XM21	100	104/60 (45)	-	-	-	-	-	-	1.5	685
	120	104/60 (45)	-	-	-	-	-	-	2.5	690
	125	104/60 (45)	-	-	-	-	-	-	2.5	690
	150	104/60 (45)	-	-	-	-	2.5	790	5	700
	200	104/60 (45)	-	-	1	845	5	810	10	720
	250	104/60 (45)	-	-	2.5	845	7.5	830	12.5	735
	300	104/60 (45)	1.5	1,775	3.75	860	10	845	15	755
	400	104/60 (45)	2.5	1,775	7.5	855	10	840	15	750
	500	104/60 (45)	7.5	1,775	10	810	15	795	20	760
	600	104/60 (45)	15	1,775	15	840	15	820	30	765
	750	104/60 (45)	15	1,775	15	885	20	860	30	785
	800	104/60 (45)	15	1,775	15	950	30	835	30	805
	1000	104/60 (45)	15	1,775	20	995	30	970	45	895
	1200	104/60 (45)	15	1,775	30	1,025	30	1,010	45	930
	1250	104/60 (45)	15	1,775	30	1,045	30	1,025	45	945
1500	104/60 (45)	15	1,775	30	1,090	30	1,065	45	995	
1600	104/60 (45)	15	1,775	30	1,115	30	1,100	45	1,020	
Rish Xmer 104/80 (45)										
XM22	200	104/80 (45)	-	-	-	-	-	-	1.5	525
	250	104/80 (45)	-	-	-	-	1.5	590	2.5	540
	300	104/80 (45)	-	-	-	-	2.5	615	7.5	560
	400	104/80 (45)	-	-	1.5	665	7.5	640	10	590
	500	104/80 (45)	-	-	5	600	10	580	10	595
	600	104/80 (45)	3.75	1,850	5	625	10	610	12.5	595
	750	104/80 (45)	5	1,850	5	690	15	675	15	620
	800	104/80 (45)	5	1,850	7.5	700	15	685	15	630
	1000	104/80 (45)	7.5	1,850	12.5	750	20	700	30	685
	1200	104/80 (45)	10	1,850	15	800	20	760	30	730
	1250	104/80 (45)	10	1,850	15	810	20	790	30	740
	1500	104/80 (45)	10	1,850	15	835	20	810	30	770
	1600	104/80 (45)	10	1,850	15	865	20	860	30	795
	2000	104/80 (45)	10	1,850	15	950	20	920	30	890

Metering Current Transformers



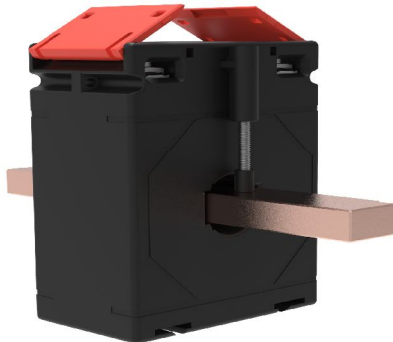
Busbar Type : Rish Xmer
Standard Secondary current: 5A

Group	Primary Current (A)	Type OD/ID (Axial)	Class 0.2s		Class 0.2		Class 0.5		Class 1	
			VA	LP (INR)	VA	LP (INR)	VA	LP (INR)	VA	LP (INR)
Rish Xmer 140/80 (45)										
XM23	200	140/80 (45)	-	-	-	-	2.5	785	5	700
	250	140/80 (45)	-	-	-	-	5	800	10	710
	300	140/80 (45)	-	-	1.5	830	7.5	810	15	725
	400	140/80 (45)	-	-	2.5	885	10	865	20	780
	500	140/80 (45)	2.5	1,925	5	1,010	15	995	30	890
	600	140/80 (45)	3.75	1,925	7.5	1,015	15	935	30	890
	750	140/80 (45)	5	1,925	10	1,075	15	1,060	45	950
	800	140/80 (45)	5	1,925	10	1,095	15	1,070	45	965
	1000	140/80 (45)	10	1,925	15	1,150	30	1,130	60	1,025
	1200	140/80 (45)	12.5	1,925	15	1,180	30	1,155	60	1,040
	1250	140/80 (45)	12.5	1,925	30	1,210	60	1,165	60	1,050
	1500	140/80 (45)	15	1,925	30	1,225	60	1,180	60	1,065
	1600	140/80 (45)	15	1,925	30	1,260	60	1,200	60	1,085
2000	140/80 (45)	15	1,925	30	1,300	60	1,245	60	1,095	
Rish Xmer 130/100 (50)										
XR06	600	130/100 (50)	2.5	1,480	2.5	1,865	5	1,690	10	1,600
	750	130/100 (50)	3.75	1,480	5	1,955	10	1,690	10	1,600
	800	130/100 (50)	5	1,480	7.5	2,045	10	1,690	10	1,600
	1000	130/100 (50)	7.5	1,480	10	2,045	15	1,955	15	1,690
	1200	130/100 (50)	10	1,850	10	2,045	15	1,955	15	1,690
	1250	130/100 (50)	10	1,850	10	2,130	15	1,955	15	1,690
	1500	130/100 (50)	10	1,850	15	2,245	15	2,130	15	1,690
	1600	130/100 (50)	10	1,850	15	2,245	15	2,130	15	1,845
	2000	130/100 (50)	10	1,850	15	2,405	15	2,290	15	2,000
	2500	130/100 (50)	10	2,695	15	2,485	15	2,375	15	2,155
	3000	130/100 (50)	12.5	2,695	15	2,600	15	2,490	15	2,270
Rish Xmer 140/100H (45)										
XM24	200	140/100H (45)	-	-	-	-	1.5	760	3.75	675
	250	140/100H (45)	-	-	-	-	2.5	775	5	690
	300	140/100H (45)	-	-	-	-	3.75	800	7.5	710
	400	140/100H (45)	-	-	1.5	835	7.5	820	10	735
	500	140/100H (45)	-	-	2.5	860	10	845	12.5	770
	600	140/100H (45)	2.5	2,000	3.75	860	10	845	15	770
	750	140/100H (45)	5	2,000	5	900	15	885	20	810
	800	140/100H (45)	5	2,000	5	920	15	900	20	820
	1000	140/100H (45)	10	2,000	10	965	15	950	20	870
	1200	140/100H (45)	10	2,000	15	1,020	15	1,000	30	925
	1250	140/100H (45)	10	2,000	15	1,030	15	1,010	30	930
	1500	140/100H (45)	15	2,000	20	1,095	20	1,075	30	1,000
	1600	140/100H (45)	15	2,000	20	1,175	20	1,100	45	1,075
	2000	140/100H (45)	15	2,000	30	1,285	45	1,190	45	1,180
	2500	140/100H (45)	15	2,000	30	1,350	45	1,295	45	1,255
	3000	140/100H (45)	15	2,000	30	1,475	60	1,420	60	1,385
	4000	140/100H (45)	15	2,000	30	1,520	60	1,505	60	1,440
Rish Xmer 140/100V(45)										
XM25	200	140/100V (45)	-	-	-	-	1.5	760	3.75	675
	250	140/100V (45)	-	-	-	-	2.5	775	5	690
	300	140/100V (45)	-	-	-	-	3.75	800	7.5	710
	400	140/100V (45)	-	-	1.5	835	10	820	10	735
	500	140/100V (45)	-	-	2.5	860	10	845	12.5	770
	600	140/100V (45)	2.5	2,000	3.75	860	13	845	15	770
	750	140/100V (45)	5	2,000	5	900	15	885	20	810
	800	140/100V (45)	5	2,000	5	920	15	900	20	820
	1000	140/100V (45)	10	2,000	10	965	15	950	20	870
	1200	140/100V (45)	10	2,000	15	1,020	15	1,000	30	925
	1250	140/100V (45)	10	2,000	15	1,030	15	1,010	30	930
	1500	140/100V (45)	15	2,000	20	1,095	30	1,075	30	1,000
	1600	140/100V (45)	15	2,000	20	1,175	45	1,165	45	1,075
	2000	140/100V (45)	15	2,000	30	1,285	45	1,275	45	1,180
	2500	140/100V (45)	15	2,000	30	1,345	45	1,330	45	1,255
	3000	140/100V (45)	15	2,000	30	1,475	60	1,460	60	1,385

Busbar Type : Rish Xmer
Standard Secondary current: 5A

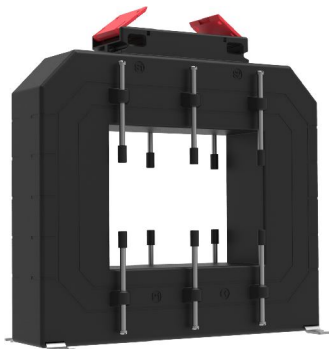
Group	Primary Current (A)	Type OD/ID (Axial)	Class 0.2s		Class 0.2		Class 0.5		Class 1	
			VA	LP (INR)	VA	LP (INR)	VA	LP (INR)	VA	LP (INR)
Rish Xmer 140/130V(45)										
XR03	400	140/130V (45)	-	-	-	-	3.75	1,025	5	920
	500	140/130V (45)	-	-	-	-	3.75	1,065	5	960
	600	140/130V (45)	-	-	-	-	3.75	1,115	5	1,005
	750	140/130V (45)	-	-	-	-	5	1,180	7.5	1,070
	800	140/130V (45)	-	-	-	-	5	1,220	7.5	1,105
	1000	140/130V (45)	-	-	5	1,365	10	1,300	10	1,180
	1200	140/130V (45)	-	-	7.5	1,445	10	1,385	15	1,265
	1250	140/130V (45)	-	-	7.5	1,490	10	1,430	15	1,300
	1500	140/130V (45)	-	-	10	1,595	15	1,530	15	1,400
	1600	140/130V (45)	-	-	10	1,655	15	1,595	15	1,460
	2000	140/130V (45)	-	-	15	1,810	20	1,745	20	1,530
	2500	140/130V (45)	-	-	15	1,865	20	1,745	20	1,530
	3000	140/130V (45)	-	-	15	1,885	20	1,830	20	1,630
	3200	140/130V (45)	-	-	15	1,905	20	1,845	20	1,695
4000	140/130V (45)	-	-	15	1,965	20	1,905	20	1,735	
5000	140/130V (45)	-	-	15	2,015	20	1,980	20	1,800	
Rish Xmer 225/125(50)										
XR04	600	225/125 (50)	-	-	5	1,385	5	1,275	10	1,165
	750	225/125 (50)	-	-	5	1,370	10	1,265	10	1,165
	800	225/125 (50)	-	-	5	1,375	10	1,275	10	1,170
	1000	225/125 (50)	5	1,955	10	1,385	10	1,285	15	1,265
	1200	225/125 (50)	5	2,280	10	1,430	10	1,325	15	1,310
	1250	225/125 (50)	5	2,280	10	1,440	10	1,370	15	1,340
	1500	225/125 (50)	7.5	2,280	10	1,485	15	1,415	30	1,380
	1600	225/125 (50)	7.5	2,280	10	1,485	15	1,420	30	1,380
	2000	225/125 (50)	10	2,810	10	1,505	15	1,410	30	1,380
	2500	225/125 (50)	10	3,005	15	1,615	30	1,515	30	1,420
	3000	225/125 (50)	10	3,005	15	1,695	30	1,625	60	1,595
	4000	225/125 (50)	15	3,270	30	1,890	45	1,725	60	1,690
	5000	225/125 (50)	15	3,670	30	2,110	100	2,045	100	1,965
	6000	225/125 (50)	15	4,085	60	2,270	100	2,185	100	2,145
Rish Xmer 225/167(50)										
XR05	1000	225/167 (50)	-	-	3.75	1,260	5	1,230	10	1,145
	1200	225/167 (50)	-	-	5	1,385	10	1,360	15	1,315
	1250	225/167 (50)	-	-	5	1,395	10	1,370	15	1,325
	1500	225/167 (50)	5	2,355	10	1,440	15	1,415	30	1,385
	1600	225/167 (50)	5	2,355	10	1,465	15	1,435	30	1,405
	2000	225/167 (50)	7.5	2,960	10	1,485	30	1,465	30	1,430
	2500	225/167 (50)	10	3,065	15	1,600	30	1,545	45	1,520
	3000	225/167 (50)	10	3,065	15	1,695	30	1,630	45	1,615
	4000	225/167 (50)	10	3,550	15	1,750	30	1,705	45	1,690
	5000	225/167 (50)	15	4,085	20	1,920	30	1,865	45	1,830
	6000	225/167 (50)	15	4,485	20	2,070	30	1,965	45	1,895
	7500	225/167 (50)	15	4,900	20	2,200	30	2,110	45	2,070

1. Please add INR 120 for 1A secondary current (Before ordering, please check feasibility with local sales office)
2. Please add INR 35 for DIN rail mounting Kit
3. For Class 0.5s CT prices, please contact local sales office
4. Various mounting options like Wall mounting, Cable mounting, Bus bar mounting & DIN Rail mounting (only for Xmer 45, Xmer 50(30), Xmer 62(40), Xmer 74(45), Xmer 86(45), Xmer 104(45), Xmer 3 PH CTs)



Busbar Type – Rish Xmer
Standard Secondary current: 5A

Group	Primary Current (A)	Type OD/ID (Axial)	Class 5P5		Class 10P5		Class 5P10		Class 10P10	
			VA	LP (INR)	VA	LP (INR)	VA	LP (INR)	VA	LP (INR)
Rish Xmer 86/50 (45)										
XP06	100	86/50 (45)	1.5	645	1.5	585	-	-	-	-
	150	86/50 (45)	1.75	685	1.75	620	-	-	-	-
	200	86/50 (45)	2.5	710	2.5	645	-	-	-	-
	250	86/50 (45)	3.75	745	3.75	685	-	-	-	-
	300	86/50 (45)	3.75	775	3.75	710	1	840	1	775
	400	86/50 (45)	5	805	5	735	1	865	1	805
	500	86/50 (45)	5	840	5	775	1	900	1	840
	600	86/50 (45)	5	865	5	805	1	930	1	865
	750	86/50 (45)	7.5	920	7.5	850	1.5	970	1.5	900
800	86/50 (45)	7.5	945	7.5	885	1.5	980	1.5	920	
Rish Xmer 104/30 (45)										
XP07	50	104/30 (45)	2.5	1,475	2.5	1,420	-	-	-	-
	60	104/30 (45)	2.5	1,495	2.5	1,430	-	-	1.5	1,220
	75	104/30 (45)	2.5	1,510	2.5	1,445	-	-	1.5	1,320
	80	104/30 (45)	2.5	1,515	2.5	1,455	1.5	1,435	1.5	1,350
	100	104/30 (45)	5	1,535	5	1,465	1.5	1,455	2.5	1,510
	125	104/30 (45)	5	1,555	5	1,495	1.5	1,470	2.5	1,525
	150	104/30 (45)	7.5	1,590	7.5	1,525	2.5	1,510	2.5	1,445
	200	104/30 (45)	10	1,640	10	1,580	3.75	1,495	3.75	1,495
	250	104/30 (45)	10	1,695	10	1,630	5	1,620	5	1,565
	300	104/30 (45)	10	1,750	10	1,690	5	1,670	5	1,620
	400	104/30 (45)	15	1,860	15	1,795	5	1,780	5	1,680
	500	104/30 (45)	15	1,970	15	1,905	7.5	1,890	7.5	1,840
600	104/30 (45)	15	2,075	15	2,010	7.5	1,935	10	1,960	
Rish Xmer 104/50 (45)										
XP08	150	104/50 (45)	2.5	1,130	2.5	1,120	-	-	-	-
	200	104/50 (45)	5	1,140	5	1,045	1.5	1,155	1.5	1,095
	250	104/50 (45)	5	1,155	7.5	1,205	2.5	1,195	2.5	1,120
	300	104/50 (45)	7.5	1,315	7.5	1,245	2.5	1,230	2.5	1,160
	400	104/50 (45)	7.5	1,395	7.5	1,330	2.5	1,315	2.5	1,245
	500	104/50 (45)	10	1,475	10	1,420	2.5	1,400	2.5	1,330
	600	104/50 (45)	10	1,560	10	1,500	2.5	1,475	2.5	1,395
	750	104/50 (45)	10	1,680	10	1,620	5	1,610	5	1,540
	800	104/50 (45)	10	1,730	10	1,665	5	1,650	5	1,580
	1000	104/50 (45)	10	1,890	10	1,825	5	1,820	5	1,745
Rish Xmer 104/60 (45)										
XP09	100	104/60 (45)	1.5	925	1.5	865	-	-	-	-
	150	104/60 (45)	2.5	960	2.5	895	1	915	1	835
	200	104/60 (45)	3.75	995	3.75	930	1	915	1	840
	250	104/60 (45)	5	1,010	5	1,060	1.5	955	1.5	885
	300	104/60 (45)	5	1,060	5	1,000	1.75	985	1.75	920
	400	104/60 (45)	7.5	1,135	7.5	1,075	1.75	1,055	1.75	985
	500	104/60 (45)	7.5	1,210	7.5	1,145	1.75	1,095	1.75	1,030
	600	104/60 (45)	7.5	1,275	7.5	1,215	1.75	1,125	1.75	1,060
	750	104/60 (45)	10	1,240	10	1,180	1.75	1,165	1.75	1,100
800	104/60 (45)	10	1,275	10	1,215	1.75	1,200	1.75	1,130	



Busbar Type – Rish Xmer
Standard Secondary current: 5A

Group	Primary Current (A)	Type OD/ID (Axial)	Class 5P5		Class 10P5		Class 5P10		Class 10P10	
			VA	LP (INR)	VA	LP (INR)	VA	LP (INR)	VA	LP (INR)
Rish Xmer 140/60 (45)										
XP10	200	140/60 (45)	7.5	2,190	7.5	2,130	2.5	2,110	2.5	2,045
	250	140/60 (45)	7.5	2,245	7.5	2,180	2.5	2,165	2.5	2,065
	300	140/60 (45)	10	2,295	10	2,235	3.75	2,215	3.75	2,095
	400	140/60 (45)	10	2,405	10	2,345	5	2,325	5	2,240
	500	140/60 (45)	10	2,515	10	2,450	5	2,440	5	2,315
	600	140/60 (45)	12.5	2,625	12.5	2,545	5	2,545	5	2,365
	750	140/60 (45)	12.5	2,790	12.5	2,705	5	2,705	5	2,500
	800	140/60 (45)	12.5	2,840	12.5	2,760	5	2,760	5	2,525
	1000	140/60 (45)	12.5	3,055	12.5	3,000	7.5	2,980	7.5	2,715
	1200	140/60 (45)	12.5	3,280	12.5	3,210	7.5	3,200	7.5	2,940
	1250	140/60 (45)	12.5	3,330	12.5	3,270	7.5	3,250	7.5	3,045
	1500	140/60 (45)	15	3,605	15	3,540	10	3,525	10	3,155
1600	140/60 (45)	15	3,710	15	3,640	10	3,635	10	3,290	
2000	140/60 (45)	20	4,145	20	4,085	12.5	3,855	12.5	3,395	
Rish Xmer 140/80 (45)										
XP11	200	140/80 (45)	5	1,885	5	1,820	2.5	1,965	2.5	1,905
	250	140/80 (45)	5	1,935	5	1,860	2.5	2,005	2.5	1,925
	300	140/80 (45)	7.5	1,970	7.5	1,905	3.75	2,055	3.75	1,960
	400	140/80 (45)	10	2,065	10	1,995	5	2,150	5	2,050
	500	140/80 (45)	10	2,155	10	2,080	5	2,235	5	2,115
	600	140/80 (45)	10	2,245	10	2,175	5	2,315	5	2,150
	750	140/80 (45)	10	2,380	10	2,310	5	2,460	5	2,190
	800	140/80 (45)	10	2,420	10	2,355	5	2,500	5	2,275
	1000	140/80 (45)	10	2,450	10	2,385	5	2,340	5	2,280
	1200	140/80 (45)	10	2,500	10	2,440	5	2,350	5	2,290
	1250	140/80 (45)	10	2,525	10	2,465	5	2,385	5	2,150
	1500	140/80 (45)	15	2,565	15	2,500	7.5	2,580	7.5	2,200
	1600	140/80 (45)	15	2,590	15	2,505	7.5	2,660	7.5	2,310
	2000	140/80 (45)	20	2,715	20	2,640	10	2,965	10	2,500
2500	140/80 (45)	20	2,885	20	2,735	10	3,345	10	2,885	
Rish Xmer 140/100 (45)										
XP12	250	140/100 (45)	2.5	1,095	2.5	1,030	-	-	-	-
	300	140/100 (45)	2.5	1,125	2.5	1,060	-	-	-	-
	400	140/100 (45)	3.75	1,195	3.75	1,125	-	-	-	-
	500	140/100 (45)	5	1,250	5	1,195	-	-	-	-
	600	140/100 (45)	5	1,315	5	1,250	1	1,235	1	1,170
	750	140/100 (45)	7.5	1,420	7.5	1,350	1	1,340	1	1,265
	800	140/100 (45)	7.5	1,445	7.5	1,380	1	1,360	1	1,305
	1000	140/100 (45)	10	1,510	10	1,445	1	1,495	1	1,430
	1200	140/100 (45)	10	1,540	10	1,470	1	1,455	1	1,380
	1250	140/100 (45)	10	1,555	10	1,495	1	1,475	1	1,410
	1500	140/100 (45)	10	1,695	10	1,635	1.25	1,620	1.25	1,555
	1600	140/100 (45)	10	1,755	10	1,695	1.25	1,675	1.25	1,615
	2000	140/100 (45)	10	1,985	10	1,930	1.25	1,905	1.25	1,845
	2500	140/100 (45)	10	2,280	10	2,205	1.25	2,195	1.25	2,130
3000	140/100 (45)	10	2,565	10	2,500	1.25	2,480	1.25	2,420	

Busbar Type – Rish Xmer
Standard Secondary current: 5A

Group	Primary Current (A)	Type OD/ID (Axial)	Class 5P5		Class 10P5		Class 5P10		Class 10P10	
			VA	LP (INR)	VA	LP (INR)	VA	LP (INR)	VA	LP (INR)
Rish Xmer 225/60 (50)										
XP13	100	225/60 (50)	10	2,670	10	2,755	-	-	-	-
	150	225/60 (50)	10	2,735	15	2,615	5	2,910	-	-
	200	225/60 (50)	10	2,785	15	2,640	7.5	2,965	10	2,900
	250	225/60 (50)	15	2,885	15	2,745	10	2,990	15	2,965
	300	225/60 (50)	15	3,010	15	2,845	10	3,025	15	3,070
	400	225/60 (50)	15	2,970	15	2,830	15	3,035	15	2,895
	500	225/60 (50)	15	2,990	15	2,860	15	3,135	15	2,990
	600	225/60 (50)	15	3,035	15	2,910	15	3,235	15	3,095
	750	225/60 (50)	15	3,095	15	2,970	15	3,395	15	3,245
	800	225/60 (50)	15	3,160	15	3,035	15	3,435	15	3,290
	1000	225/60 (50)	15	3,285	15	3,145	15	3,640	15	3,495
	1200	225/60 (50)	15	3,435	15	3,310	15	3,725	15	3,580
	1250	225/60 (50)	15	3,450	15	3,325	15	3,745	15	3,600
	1500	225/60 (50)	15	3,580	15	3,450	15	3,835	15	3,700
2000	225/60 (50)	15	3,675	15	3,545	15	4,065	15	3,925	
Rish Xmer 225/125 (50)										
XP14	600	225/125 (50)	5	1,710	5	1,560	-	-	-	-
	750	225/125 (50)	5	1,765	10	1,925	-	-	-	-
	800	225/125 (50)	5	1,785	10	1,935	-	-	-	-
	1000	225/125 (50)	10	2,000	10	1,855	-	-	-	-
	1200	225/125 (50)	10	2,150	15	2,335	1.5	2,315	2.5	2,280
	1250	225/125 (50)	10	2,165	15	2,370	1.5	2,355	2.5	2,290
	1500	225/125 (50)	15	2,310	15	2,150	2.5	2,310	2.5	2,300
	1600	225/125 (50)	15	2,385	15	2,245	2.5	2,310	2.5	2,300
	2000	225/125 (50)	15	2,545	15	2,385	3.75	2,640	5	2,670
	2500	225/125 (50)	15	2,640	15	2,480	5	2,910	7.5	2,965
	3000	225/125 (50)	15	2,795	20	2,845	5	3,045	7.5	3,175
	4000	225/125 (50)	15	2,900	20	2,965	5	3,105	7.5	3,285
5000	225/125 (50)	20	3,105	20	2,910	5	3,260	10	3,410	
Rish Xmer 225/167 (50)										
XP15	1000	225/167 (50)	5	2,165	5	1,970	-	-	-	-
	1200	225/167 (50)	5	2,180	7.5	2,205	1.5	2,370	2.5	2,315
	1250	225/167 (50)	5	2,245	7.5	2,245	1.5	2,400	2.5	2,355
	1500	225/167 (50)	5	2,310	7.5	2,335	2.5	2,445	3.75	2,440
	1600	225/167 (50)	5	2,335	7.5	2,370	2.5	2,485	3.75	2,420
	2000	225/167 (50)	7.5	2,525	12.5	2,565	3.75	2,705	5	2,735
	2500	225/167 (50)	10	2,625	15	2,690	3.75	2,755	7.5	2,715
	3000	225/167 (50)	15	2,715	20	2,815	7.5	3,070	10	3,045
	4000	225/167 (50)	20	3,045	20	2,865	7.5	3,360	12.5	3,360
	5000	225/167 (50)	20	3,235	20	3,025	7.5	3,345	12.5	3,435
	6000	225/167 (50)	20	3,250	20	3,040	7.5	3,365	12.5	3,455

Note :-

1. Please add INR 120 for 1A secondary current (Before ordering, please check feasibility with local sales office)
2. Please add INR 35 for DIN rail Mounting Kit
3. For any non-standard item, please contact local sales office
4. Various mounting options like Wall mounting, Cable mounting, Bus bar mounting & DIN Rail mounting (only for Xmer 45, Xmer 50(30), Xmer 62(40), Xmer 74(45), Xmer 86(45), Xmer 104(45), Xmer 3 PH CTs)

TW-E series (without encapsulation)

Standard Secondary current: 5A

Group	Primary Current (A)	Type OD/ID (Axial)	Class 5P10	
			VA	LP (INR)
Protection Class CT (Rish TW-E Series)				
XP01	100	140 / 30 (140)	15	6,055
	150	140 / 30 (100)	15	3,710
	200	140 / 50 (100)	15	3,135
	250	140 / 50 (90)	15	3,135
	400	140 / 60 (80)	15	1,820
	600	140 / 60 (60)	15	1,710
	800	140 / 80 (80)	15	1,735
	1000	160 / 105 (70)	15	1,790
	1200	160 / 105 (70)	15	1,820
	1250	160 / 105 (70)	15	1,820
	1600	180 / 115 (50)	15	1,870
2000	185 / 130 (50)	15	1,905	

Note :-

1. Please add INR 120 for 1A secondary current (Before ordering, please check feasibility with local sales office)
2. For any non-standard item, please contact local sales office



TW series CT
Standard Secondary current : 5 A

Group	Primary Current (A)	Class 0.2		Class 0.5S		Class 0.5		Class 1	
		VA	LP (INR)	VA	LP (INR)	VA	LP (INR)	VA	LP (INR)
TW-1 : OD X ID X HT:- 73 X 30 X 40mm									
TW01	50	-	-	-	-	-	-	1.5	350
	60	-	-	-	-	-	-	1.5	350
	75	-	-	-	-	-	-	1.5	350
	80	-	-	-	-	-	-	1.5	350
	100	-	-	-	-	1.5	390	2.5	350
	120	-	-	-	-	1.5	390	2.5	375
	125	-	-	-	-	2.5	410	3.75	390
	150	-	-	-	-	2.5	420	5	410
200	-	-	-	-	5	435	10	410	
TW-2 : OD X ID X HT:- 73 X 30 X 50mm									
TW02	50	-	-	-	-	-	-	1.5	425
	60	-	-	-	-	-	-	1.5	435
	75	-	-	-	-	1.5	455	2.5	435
	80	-	-	-	-	1.5	455	2.5	435
	100	-	-	-	-	2.5	470	5	450
	120	-	-	-	-	2.5	470	5	455
	125	-	-	-	-	2.5	470	5	455
	150	-	-	2.5	485	5	470	10	470
	200	2.5	525	5	500	10	485	15	485
TW-3 : OD X ID X HT:- 92 X 43 X 41mm									
TW03	75	-	-	-	-	-	-	1	485
	80	-	-	-	-	-	-	1.5	490
	100	-	-	-	-	1	495	2.5	500
	120	-	-	-	-	1	495	2.5	505
	125	-	-	-	-	1	495	2.5	505
	150	-	-	-	-	1.5	505	3.75	505
	200	1.5	605	5	570	5	510	10	505
	250	2.5	615	7.5	585	7.5	515	15	505
300	3.75	630	10	585	10	520	20	505	
TW-4 : ODX ID X HT:- 100 X 58 X 41mm									
TW04	120	-	-	-	-	-	-	1	450
	125	-	-	-	-	-	-	1.5	450
	150	-	-	-	-	1	455	2.5	450
	200	-	-	1.5	480	2.5	455	5	450
	250	-	-	2.5	500	3.75	480	7.5	480
	300	-	-	3.75	515	5	490	10	480
	400	5	555	7.5	500	10	450	20	480
	500	7.5	575	10	510	15	480	25	480
600	10	595	15	520	15	495	25	495	
TW-5 : OD X ID X HT:- 110 X 72 X 41mm									
TW05	200	-	-	-	-	-	-	1.5	480
	250	-	-	-	-	1.5	505	2.5	505
	300	-	-	-	-	2.5	525	5	525
	400	2.5	585	5	565	7.5	545	12.5	545
	500	3.75	610	7.5	585	10	575	15	575
	600	5	625	7.5	605	10	590	15	590
	800	10	640	15	620	15	605	30	605
	1000	10	650	15	640	15	630	30	630
TW-6 : OD X ID X HT:- 159 X 113 X 40mm									
TW06	600	1.5	715	3.75	705	5	690	10	690
	800	2.5	725	7.5	715	10	705	15	705
	1000	3.75	750	7.5	725	10	715	15	715
	1200	15	785	15	770	20	760	30	760
	1250	15	805	15	800	20	795	30	795
	1500	15	830	15	830	20	825	30	825
	1600	15	865	15	860	20	855	30	855
	2000	15	905	20	885	25	875	45	875
	2500	15	955	20	950	25	945	45	940
	3000	15	1,030	25	1,020	30	1,010	45	1,000
	3200	15	1,100	25	1,065	30	1,060	45	1,045

Sr. No.	Accessories (Optional) - Wall Mounting Bracket	OD/ID (AXIAL)	LP (INR)
1	TW-2	73/30 (50)	45
2	TW-3	92/43 (41)	50
3	TW-4	100/58 (41)	60
4	TW-5	110/72 (41)	60
5	TW-6	159/113 (40)	65

Note :-

1. Please add INR 120 for 1A secondary current (Before ordering, please check feasibility with local sales office)
2. For any non-standard item, please contact local sales office

TW e series CT

Standard Secondary current : 5 A

Group	Primary Current (A)	Class 0.5		Class 1	
		VA	LP (INR)	VA	LP (INR)
OD X ID X HT : 73 X 30 X 50mm					
TE01	50	-	-	-	-
	60	-	-	-	-
	75	-	-	-	-
	100	2.5	525	5	380
	150	5	525	5	380
	200	5	385	5	380
	200	10	525	15	390
OD X ID XHT : 80 X 30 X 100mm (Without Encapsulation)					
TE02	100	2.5	700	10	565
	100	-	-	15	1,375
	150	5	1,305	15	1,160
OD X ID XHT : 92 X 43 X 41mm					
TE03	200	5	405	5	380
	200	-	-	10	405
	200	-	-	15	680
	250	5	405	5	380
	250	7.5	575	10	435
	250	-	-	15	680
	300	5	425	5	385
	300	10	600	10	470
	300	-	-	15	600
	400	-	-	5	395
	400	-	-	15	530
OD X ID XHT : 95 X 50 X 40mm					
TE04	200	5	490	5	370
	200	-	-	10	410
	200	-	-	15	700
	250	5	450	5	390
	250	7.5	640	10	505
	250	-	-	15	725
	300	5	460	5	435
	300	10	675	10	530
	300	-	-	15	660
OD X ID XHT : 100 x 58 x 41mm					
TE05	400	5	410	5	385
	400	10	580	15	435
	500	5	410	5	385
	500	10	435	10	410
	500	15	580	15	435
	600	5	410	5	385
	600	10	435	10	435
	600	15	580	15	435
OD X ID XHT : 110 x 72 x 41mm					
TE06	800	5	415	5	385
	800	10	430	10	410
	800	15	550	15	415
	1000	5	430	5	395
	1000	15	605	15	470

Group	Primary Current (A)	Class 0.5		Class 1	
		VA	LP (INR)	VA	LP (INR)
OD X ID XHT : 135 x 85 x 30mm					
TE07	800	5	410	5	395
	800	10	440	10	430
	800	15	675	15	530
	1000	5	410	5	385
	1000	15	675	15	530
	1200	-	-	15	580
OD X ID XHT : 159 x 113 x 40mm					
TE08	1200	15	675	15	530
	1500	15	810	15	675
	1600	15	840	15	700
	2000	15	910	15	775
OD X ID XHT : 165 X 130 X 30mm					
TE09	2400	15	1,005	15	865
	2500	15	1,005	15	865
	3000	15	1,090	15	945
OD X ID XHT : 190 X 150 X 40mm (Without Encapsulation)					
TE10	3200	15	1,305	15	1,170
OD X ID XHT : 235 X 200 X 35mm (Without Encapsulation)					
TE11	4000	-	-	15	1,590
	5000	-	-	15	2,115

Accessories (Optional) - Wall Mounting Bracket

Sr. No.	OD/ID (AXIAL)	LP (INR)
1	73/30 (50)	45
2	92/43 (41)	50
3	100/58 (41)	60
4	110/72 (41)	60
5	159/113 (40)	65

Note :

1. Please add INR 120 for 1A secondary current (Before ordering, please check feasibility with local sales office)
2. Please add INR 35 for Busbar Mounting Kit
3. For any non-standard item, please contact local sales office

Summation CT
Standard Secondary current: 5A

Group	Primary Current (A)	Type	Class 0.5		Class 1		
			VA	LP (INR)	VA	LP (INR)	
XU01	5+5	Rish Xmer Sigma 75	5	1,265	5	1,135	
			10	1,275	10	1,150	
			15	1,300	15	1,175	
			-	-	20	1,275	
			-	-	25	1,300	
			5	1,340	5	1,150	
	5+5+5		Rish Xmer Sigma 75	10	1,355	10	1,170
				15	1,380	15	1,195
				-	-	20	1,355
				-	-	25	1,380
				5	1,390	5	1,160
				10	1,410	10	1,175
	5+5+5+5	Rish Xmer Sigma 75	15	1,420	15	1,195	
			-	-	20	1,405	
			-	-	25	1,420	
			5	1,460	5	1,255	
			10	1,475	10	1,275	
			15	1,515	15	1,295	
	5+5+5+5+5	Rish Xmer Sigma 150	-	-	20	1,475	
			-	-	25	1,515	
			5	1,520	5	1,285	
			10	1,540	10	1,300	
			15	1,560	15	1,315	
			-	-	20	1,540	
5+5+5+5+5+5	Rish Xmer Sigma 150	-	-	25	1,560		
		5	1,540	5	1,325		
		10	1,560	10	1,350		
		15	1,580	15	1,365		
		-	-	20	1,560		
		-	-	25	1,580		
5+5+5+5+5+5+5	Rish Xmer Sigma 150	5	1,600	5	1,400		
		10	1,635	10	1,430		
		15	1,670	15	1,450		
		-	-	20	1,625		
		-	-	25	1,670		



Accuracy Class 0.5

Group	Current Rating (A)	LP (INR)		
		50/60/75mV	100mV	150mV
YN01	1	220	335	385
	5	220	360	385
	10	220	360	385
	15	220	405	430
	20	220	405	430
	25	260	405	430
	30	260	420	455
	40	260	420	465
	50	260	420	530
	60	260	450	665
	75	260	475	765
	100	330	570	895
	125	410	730	945
	150	410	730	1,100
	175	720	910	1,295
	200	735	980	1,395
	250	810	1,100	1,610
	300	1,050	1,270	1,880
	400	1,155	1,570	2,165
	500	1,205	1,685	2,410
	600	1,275	1,890	2,735
	750	1,420	1,980	3,265
	800	2,020	2,950	4,470
	1000	3,100	3,620	6,250
	1200	3,360	3,930	8,130
	1250	4,255	4,950	8,750
	1500	4,895	5,440	9,640
	2000	5,145	6,700	14,280
	2500	5,565	7,930	15,180
	3000	6,090	10,260	17,180
4000	8,665	15,455	22,130	
5000	13,755	18,875	27,305	
6000	22,105	24,095	35,345	
7500	26,775	32,950	44,610	
10000	52,355	66,510	71,380	
15000	89,385	97,990	1,07,340	

Note :

1. For 0.2 CI Shunt (upto 2500A), multiply the standard price by 1.3
2. For any non-standard item, please contact local sales office
3. "Insulating Base" will be supplied with shunts 1 to 30A shunt ratings only



Terms and conditions

- This issue of Price List supersedes all previous Price Lists
- All Prices are in INR
- The prices are subject to change without prior notice
- List Prices mentioned are exclusive of all taxes & duties
- Prices charged will be as prevailing on the date of dispatch
- Minimum order value criterion should be observed while ordering
- The company reserves the right to supply goods at its discretion
- For any non-standard requirement, please contact nearest sales office regarding technical feasibility, price & delivery

Warranty

- All the products listed in the Price List carry a warranty of 18 months against manufacturing defects (unless otherwise specified) from the date of purchase or 12 months from the date of commissioning, whichever is earlier

Note

- To facilitate the ordering kindly make use of product configurator
- For Energy Management Solutions (EMS) enquiries, please contact nearest sales office
- Kindly refer respective datasheets for detailed technical specifications. Technical specs given in this price list are in abbreviated form only for easy understanding. Selection of products must be done from the datasheets.
- Since the product approvals mentioned in the price list are on generic header level, kindly contact to our nearest sales office for productwise approvals
- For any enquiry regarding Energy Measurement Software and Solar Inverters, kindly contact our sales office.



Product up-gradation is a continuous process. Hence data in this price list are subject to change without prior notice. For the latest information, please get in touch with our sales offices



Measure



Control



Record



Analyze

RISHABH INSTRUMENTS PVT. LTD.

+91 253 2202028/99 | marketing@rishabh.co.in | www.rishabh.co.in